



Concept Design *Presentation*

Project Loft Flat

Location Moscow, Russia

Client ENTER Construction

Date 08.12.2020

Contact www.enterconstruction.ru

repair@enterconstruction.ru

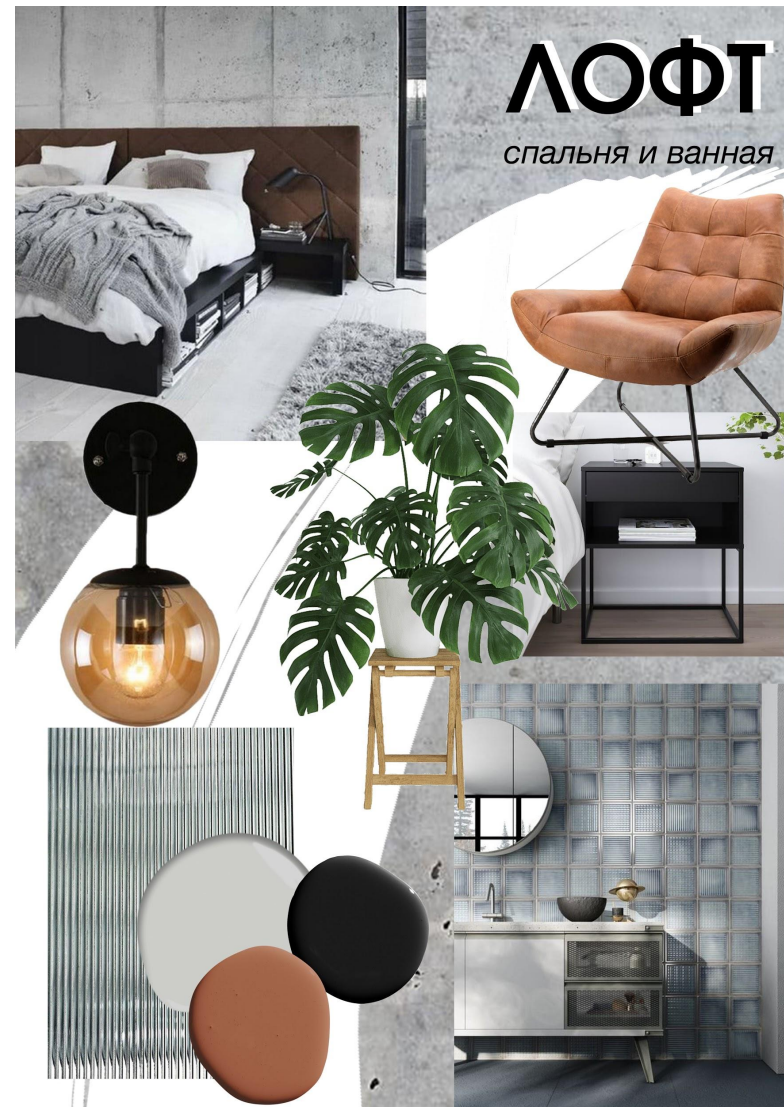
+7 977 266 20 68

Designer Nigar Ibrahimzade
Afsun Pashmineh

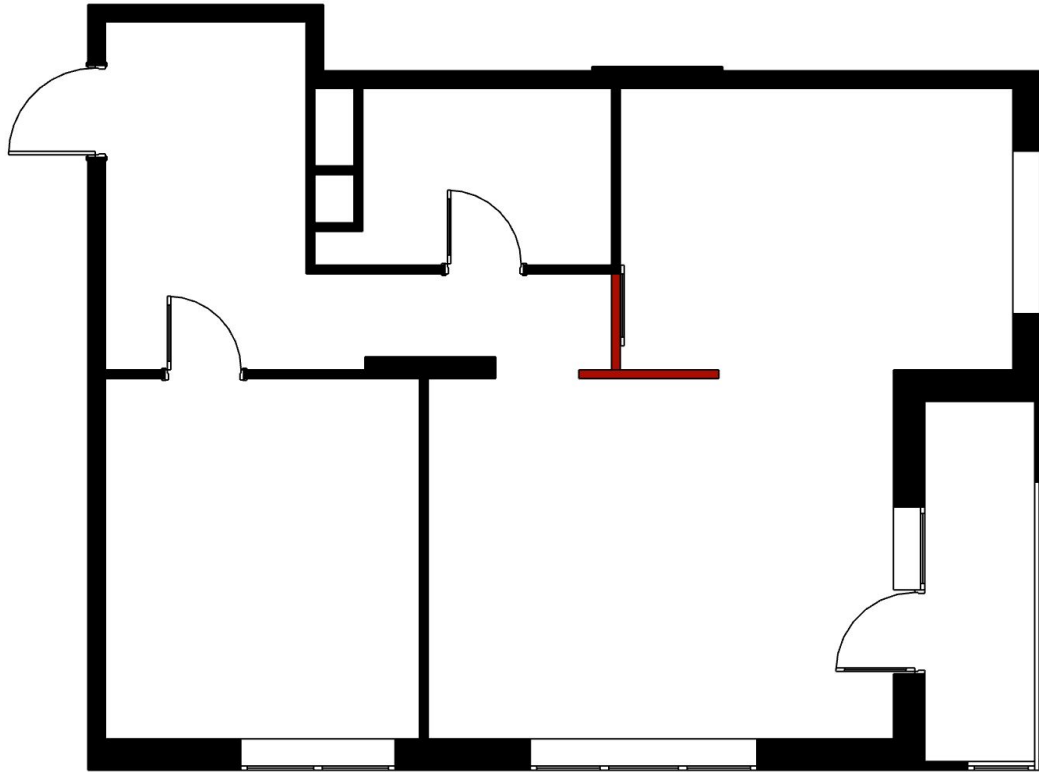
Contact Ragin.zade@gmail.com
afsunmehmani@gmail.com

MOODBOARDS

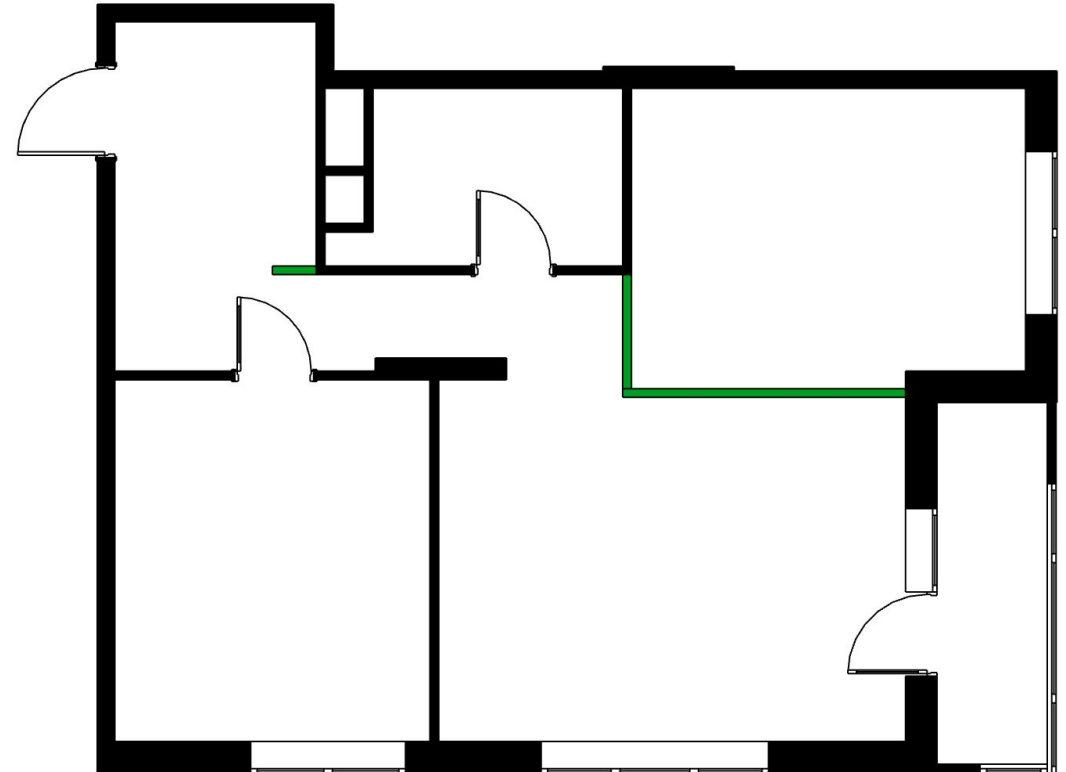
Loft



DEMOLITION PLAN AND PROPOSED PLAN



Demolition plan

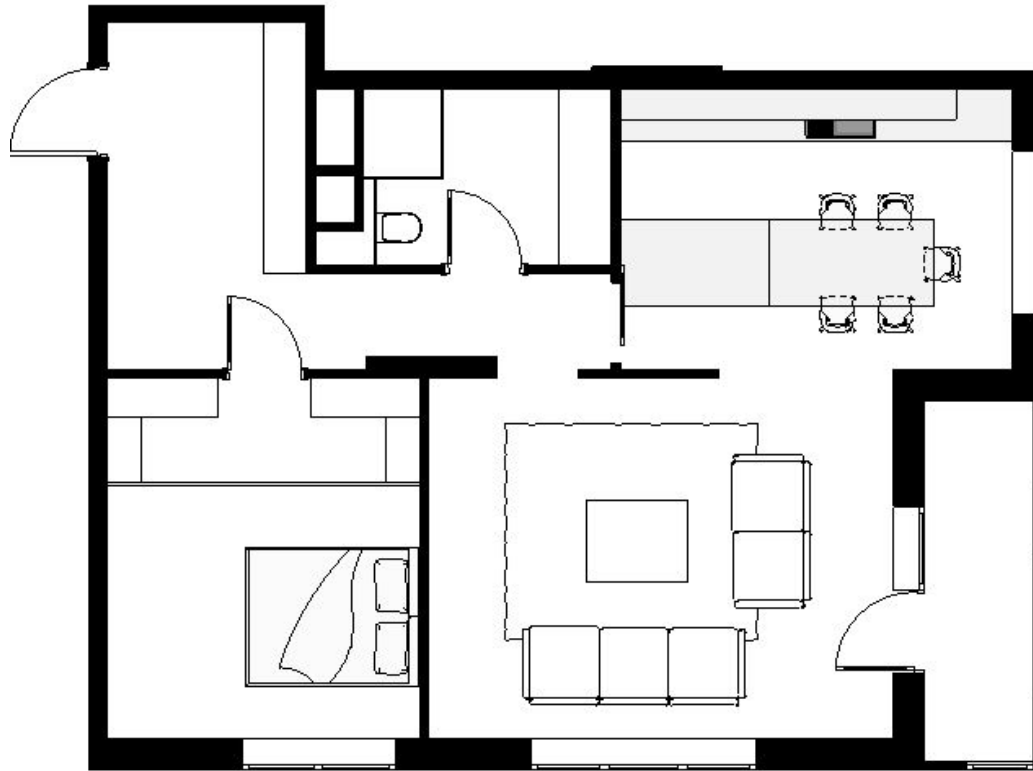


Proposed plan

Walls planned to be demolished is shown on the existing plan with red color with the purpose of visually separating and connecting at the same time the living room and the kitchen areas .

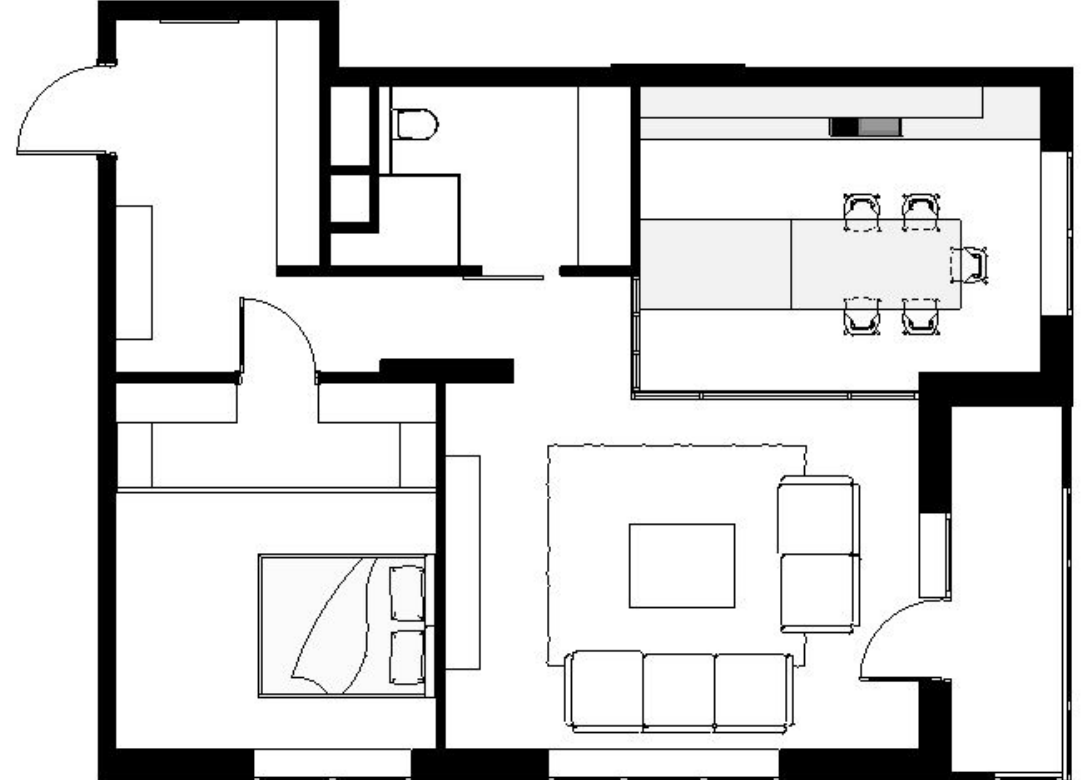
Walls planned to be built is shown on the proposed plan with green color. We only proposed slight changes for cost efficiency.

EXISTING AND PROPOSED DESIGN



Existing design

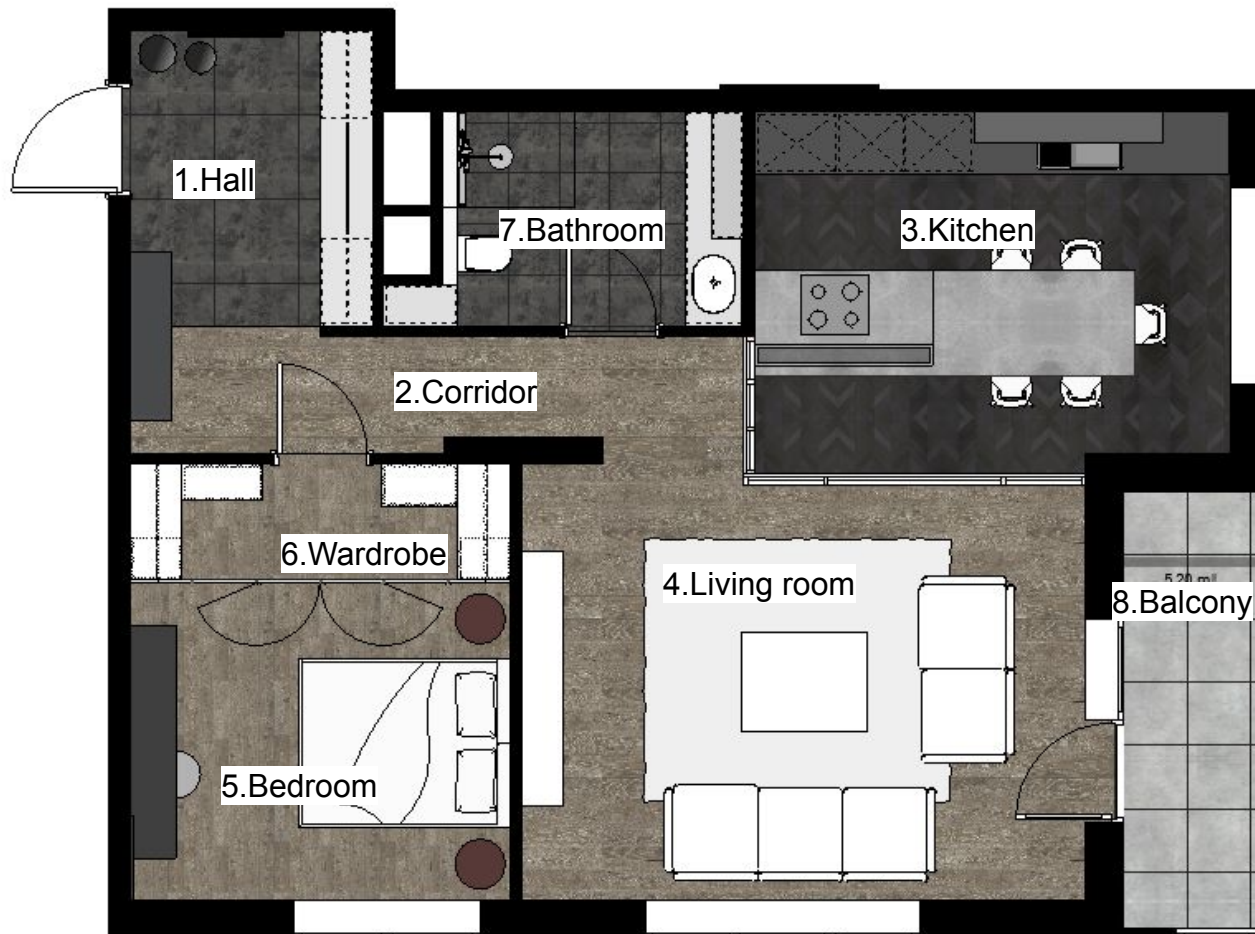
We proposed an alternative design solution in case of the walls are not allowed to be changed or demolished.



Proposed design

In the proposed design the kitchen and the living room are separated by a glass partition wall, creating more luminous and open space for a relatively smaller apartment.

FURNITURE PLAN



1.Hall - 6.48 m²

2.Corridor- 6.17 m²

3.Kitchen - 15.23 m²

4.Living room - 21.91 m²

5.Bedroom - 10.78 m²

6.Wardrobe - 3.96 m²

7.Bathroom - 5.98 m²

8.Balcony - 5.20 m²

Total - 78.08 m²

(Internal walls and balcony included)

KITCHEN-LIVING ROOM

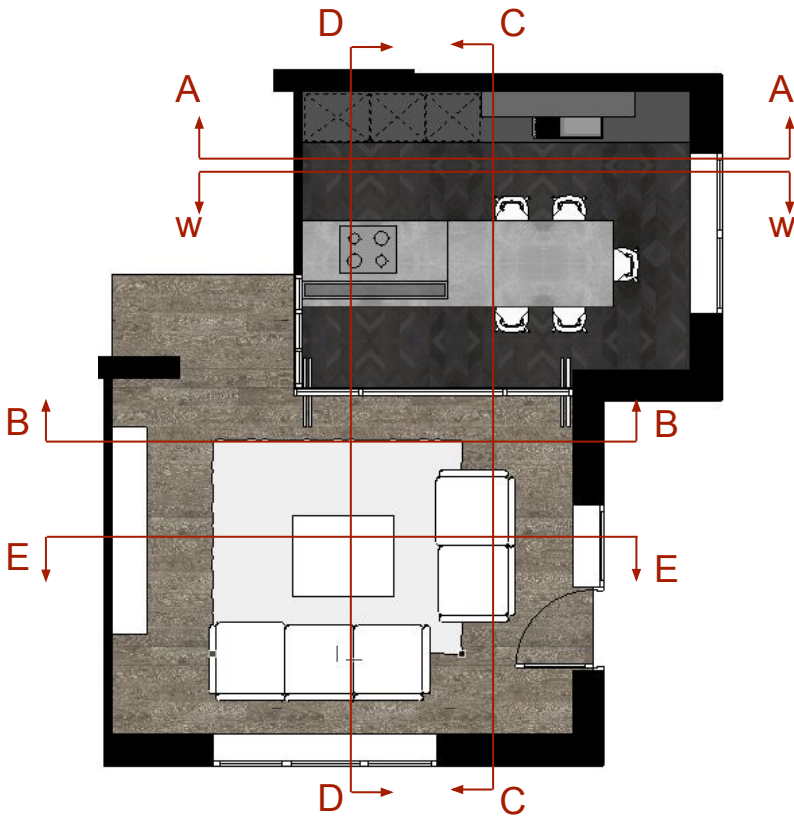
Collage



KITCHEN

SECTION A-A, W-W

SECTION A-A



In the kitchen we kept the colors dark (mostly black and dark gray) but added a touch of coral-peach color by adding the wall tiles to brighten up the space. While the lower cabinet doors are wooden looking matte, the top cabinets are glossy and monochrome.



SECTION W-W

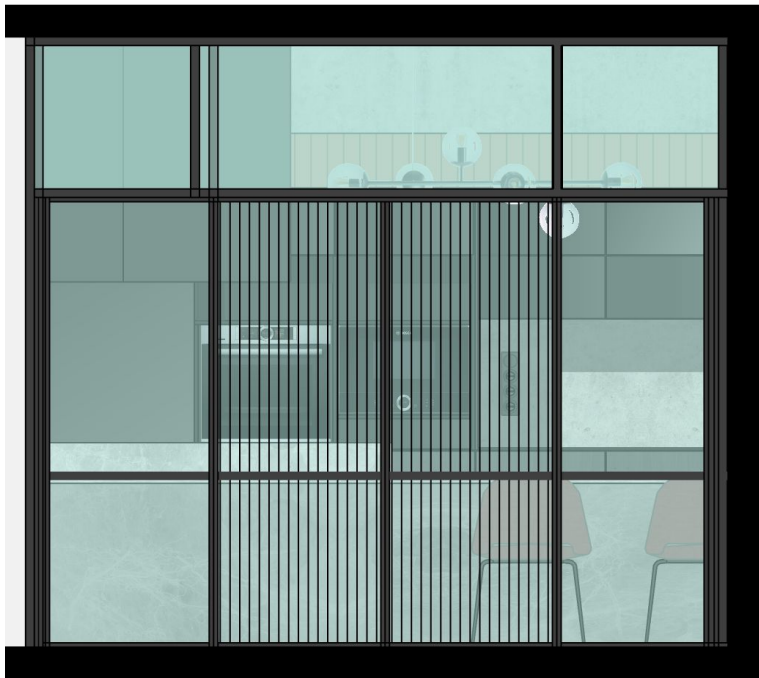


KITCHEN

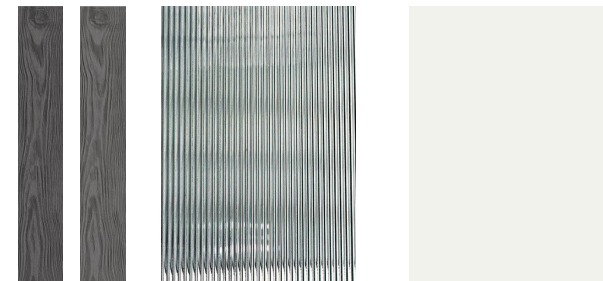
SECTION B-B

The separation wall consisting of black metal profiles and tinted glass material creates a sort of division between the kitchen and the living room. When the folding doors of the separation wall are open it combines the space between the kitchen and the living room, making it look more spacious. Proposed ridged glass for the doors of the wall created additional dynamism to the scene. Keeping the kitchen cabinets dark with a touch of gray-concrete in the island completes the whole harmonic look of the kitchen.

SECTION B-B CLOSED DOORS



SECTION B-B OPEN DOORS



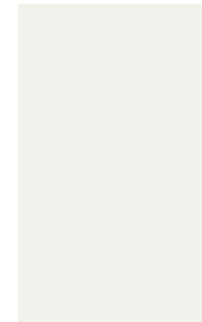
LIVING ROOM-KITCHEN

SECTION C-C

We designed a simpler TV stand with grey-white wall color to a lighter looking wall of the living room. By keeping concrete looking kitchen wall is completed by grey island and an industrial style ceiling lamp.

Living room

Kitchen



KITCHEN

3D Visualisations



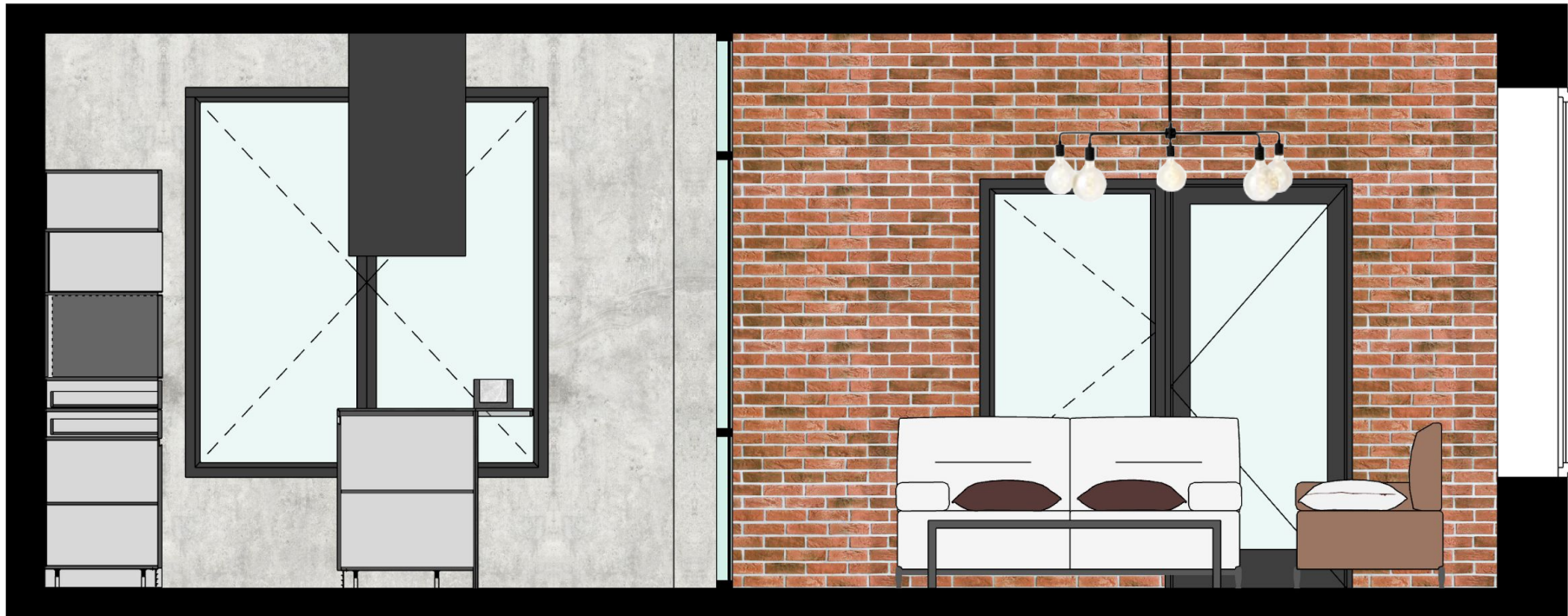
KITCHEN-LIVING ROOM

SECTION D-D

The window wall of the kitchen is accompanied by concrete walls. On the other side of the separation wall, brick living room wall acts as an accent wall, making the room more dynamic and industrial looking. The seating area is composed by 2 large sofas and a coffee table.

Kitchen

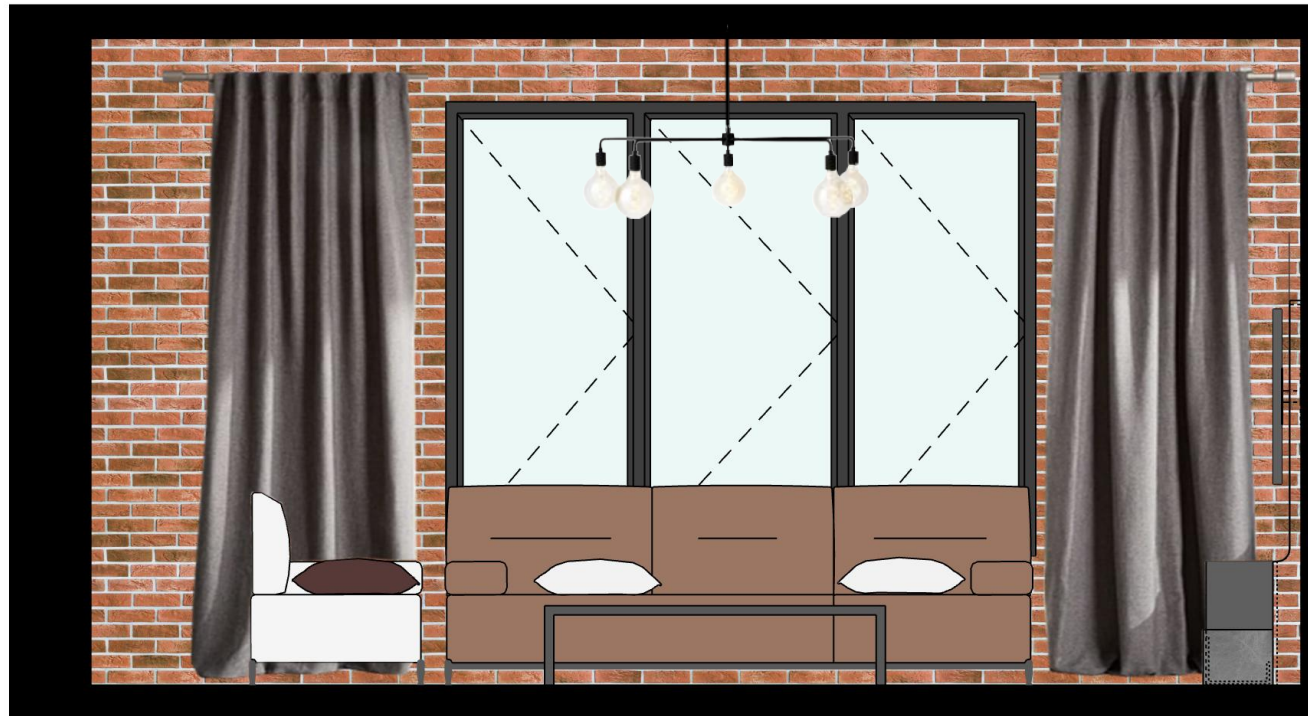
Living Room



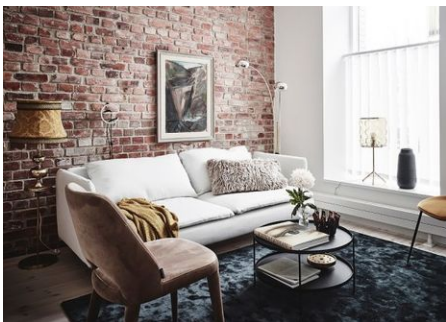
LIVING ROOM

SECTION E-E

SECTION E-E



On the joined side of the living room the same brick wall continues. Windows are framed with plain gray curtains. The ceiling light is also in industrial style without any decoration, completing the whole look of the room.



LIVING ROOM

3D Visualisations



BEDROOM-WARDROBE

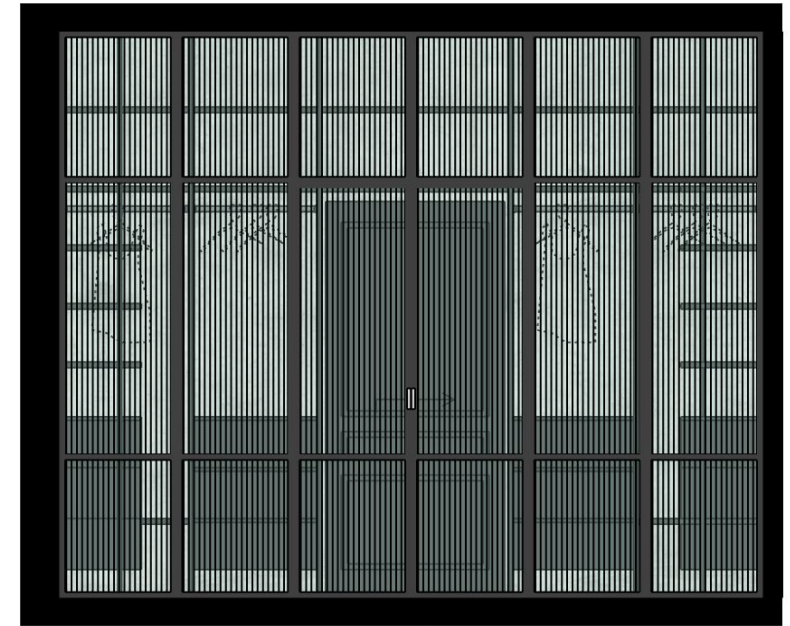
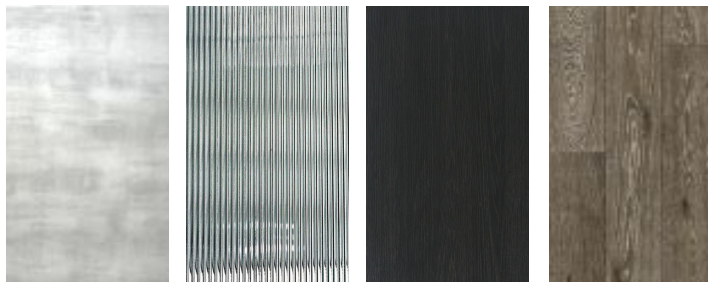
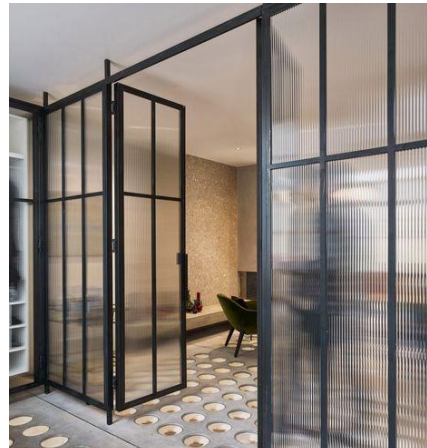
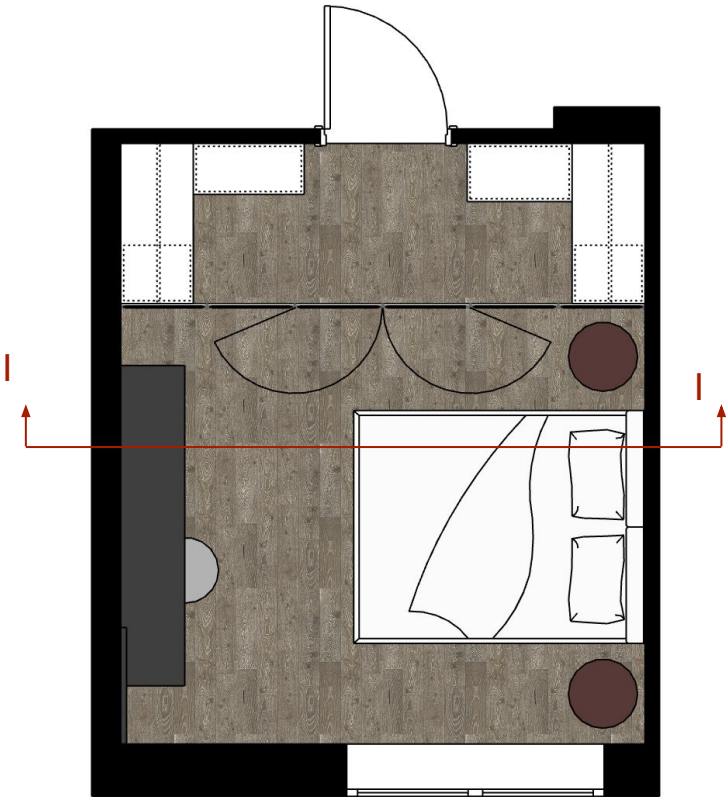
Collage



BEDROOM-WARDROBE

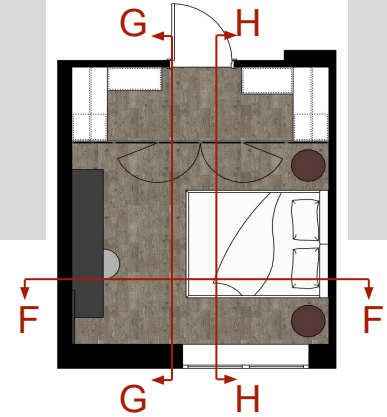
SECTION I-I

The master wardrobe is placed in the entrance of the bedroom, separated from the rest of the bedroom with the glass partition wall. Ridged green tinted glass of the partition wall creates the look of recycled glass which adds to an industrial feel of the room.

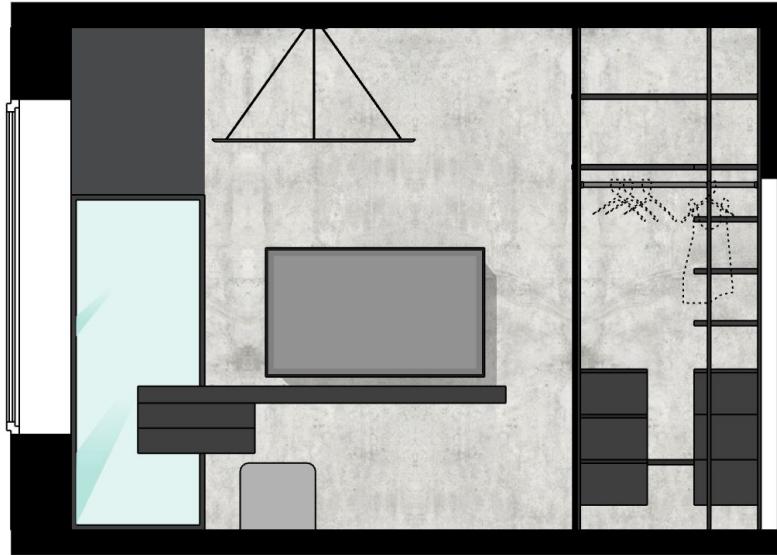


BEDROOM-WARDROBE

SECTION G-G; H-H; F-F



SECTION G-G

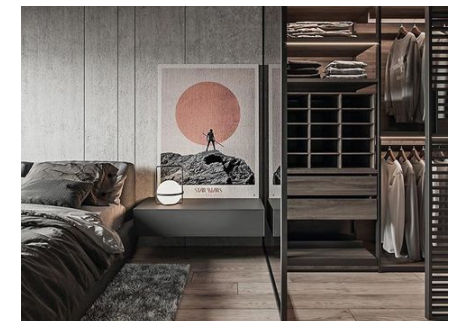
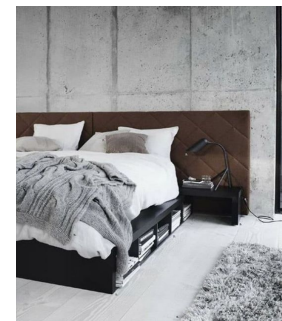


SECTION F-F



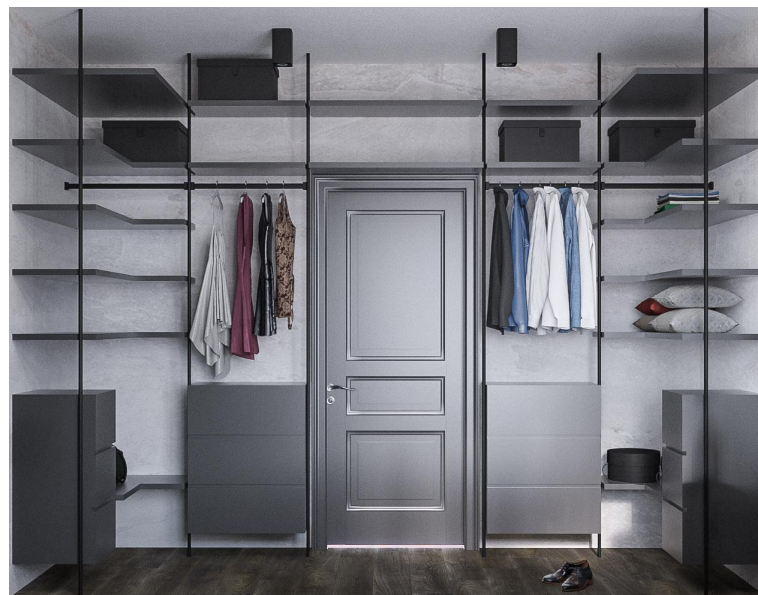
Brown leather headboard of the bed adds an earthy feel to the gray concrete walls. The vanity table extend to a TV stand, connects the pieces, added tall mirror on the back of the vanity reflects the light from the window. The darker wall of the bedroom is completed by the simple tulle curtain to avoid a heavy look. A simplistic ceiling lamp adds lighting to the room without overcrowding the room.

SECTION H-H



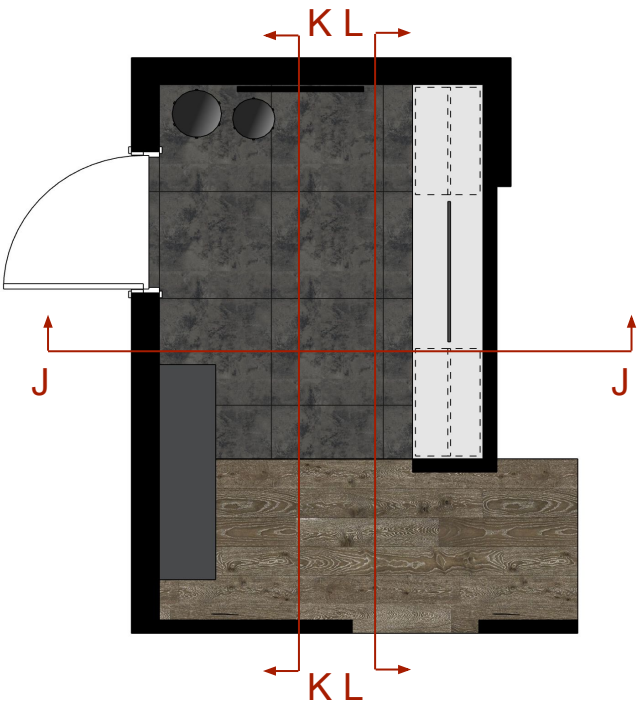
BEDROOM-WARDROBE

3D Visualisations

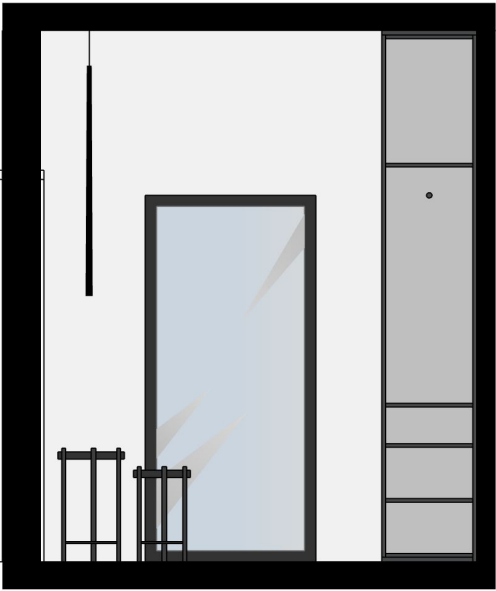


ENTRANCE HALL

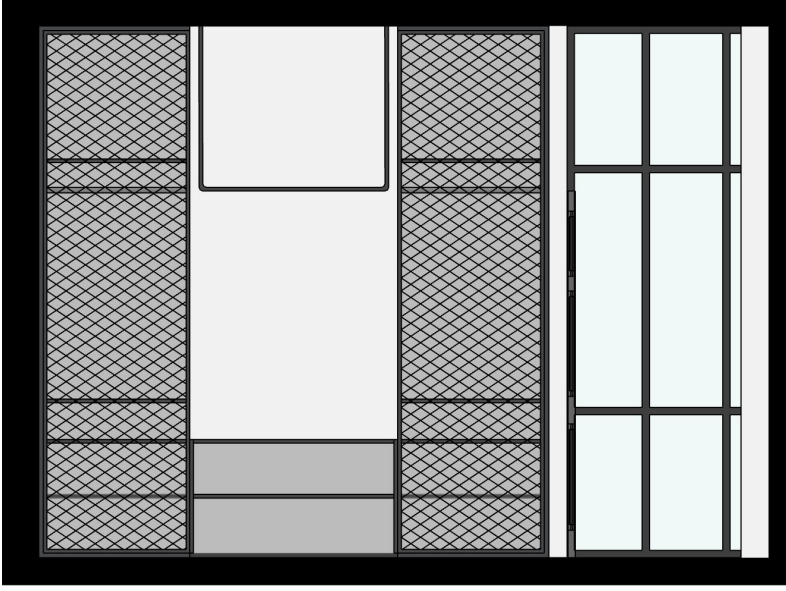
SECTION K-K; L-L; J-J



SECTION J-J



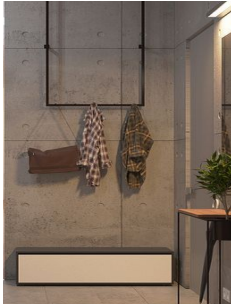
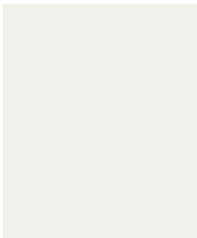
SECTION L-L



SECTION K-K

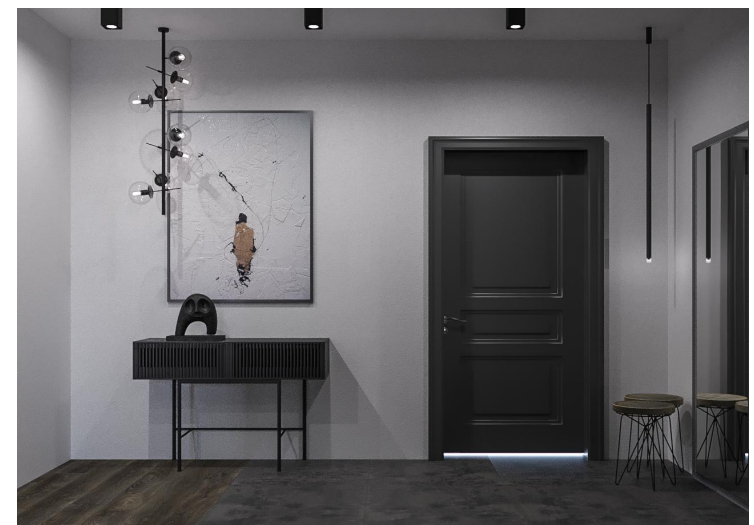
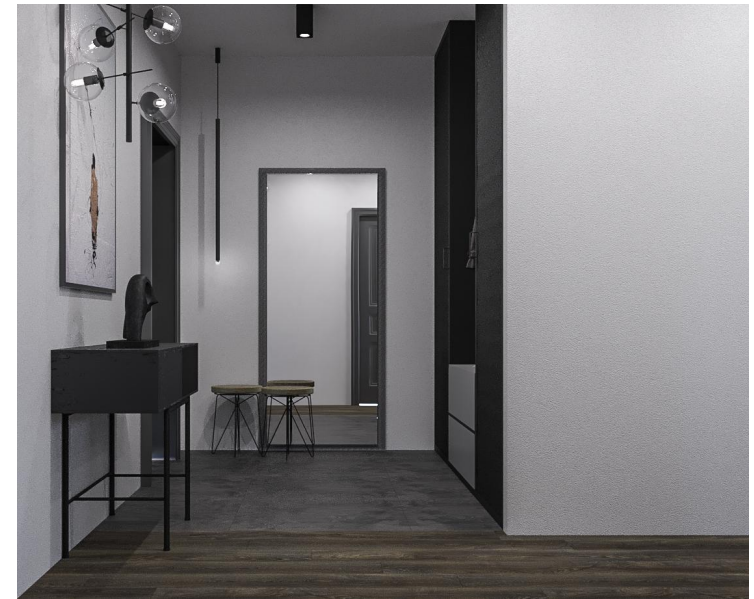


We kept the entrance of the apartment simple, with darker floor tiles going into wooden floor, with the gray-white wall as in the living room. The wardrobe, console and the linear ceiling lamp is kept in black industrial style. The black metal material used in wardrobe provides complexity to the design while hanging rack creates lighter looking feel



ENTRANCE HALL

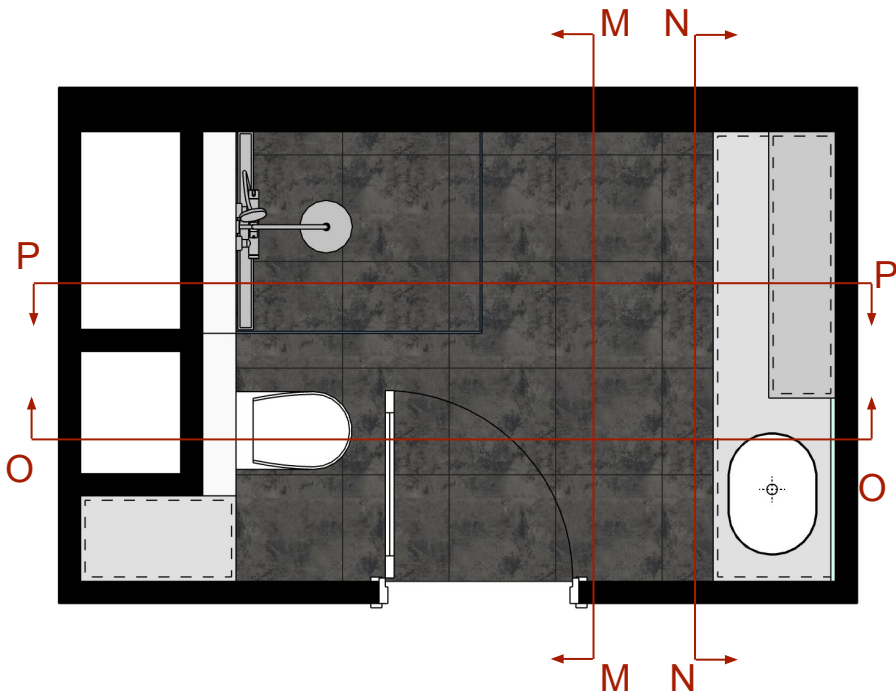
3D Visualisations



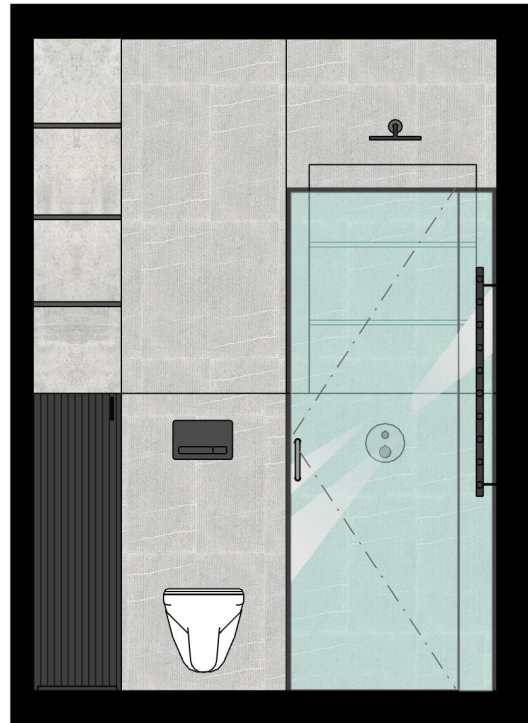
BATHROOM

SECTION M-M;N-N

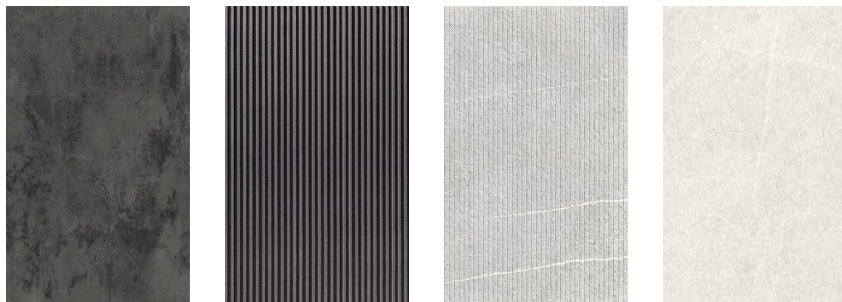
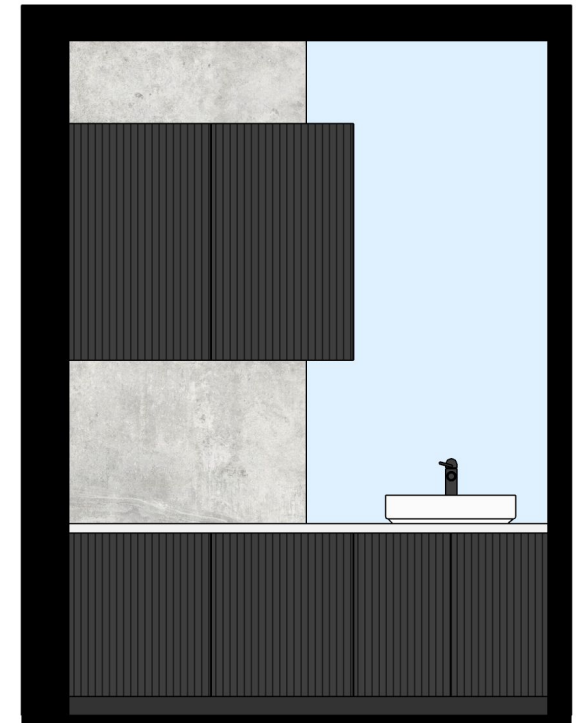
The same floor tiles used in the entrance is used in the floor of the bathroom. The room is kept in the gray and black tones as the rest of the apartment. Bathroom furniture was designed very simply, meanwhile the ridged texture of the furniture doors creates little dynamism.



SECTION M-M



SECTION N-N



BATHROOM

SECTION O-O;P-P

Dark floors are accompanied by two types of light gray wall tiles, and concrete looking wall coating. One of the tiles has a ridged finish, and the other one is simpler. We chose a very simple shower door with black frame, as well as the other bathroom accessories to complete the black theme.

SECTION O-O



SECTION P-P



BATHROOM

3D Visualisations

