



Concept Design Presentation

Project Neoclassical Flat

Location Moscow, Russia

Client ENTER Construction

Date 09.11.2020

Contact www.enterconstrcution.ru
repair@enterconstruction.ru
+7 977 266 20 68

Designer Nigar Ibrahimzade
Afsun Pashmineh

Contact Ragin.zade@gmail.com
afsunmehmani@gmail.com

НЕО- КЛАССИКА

гостиная и кухня



НЕО- КЛАССИКА

ванная и холл



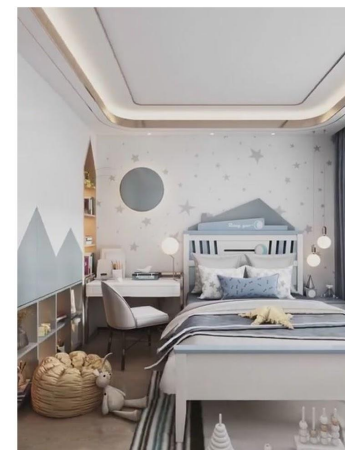
НЕО- КЛАССИКА

спальня и ванная

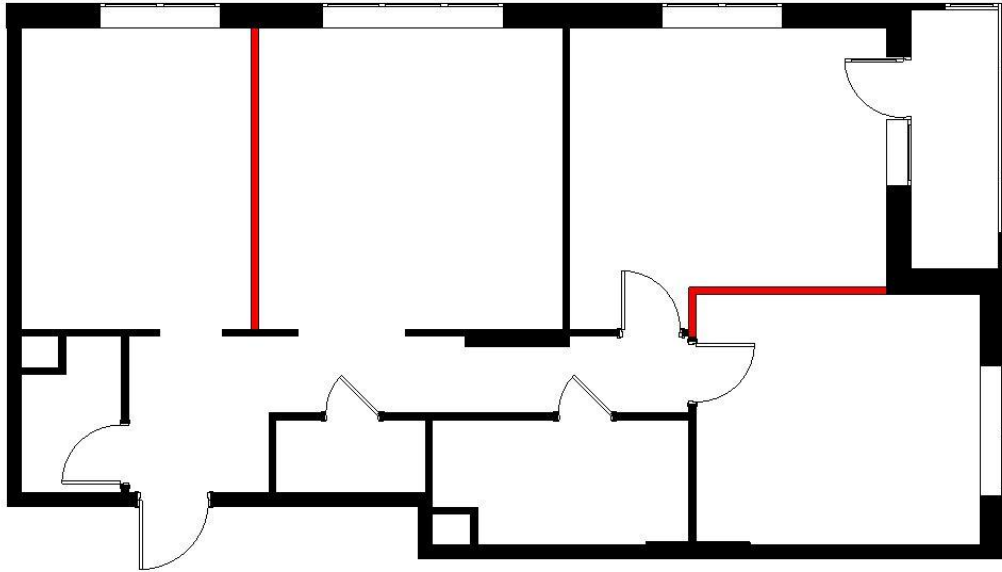


НЕО- КЛАССИКА

детская комната



DEMOLITION PLAN AND PROPOSED PLAN



Demolition plan

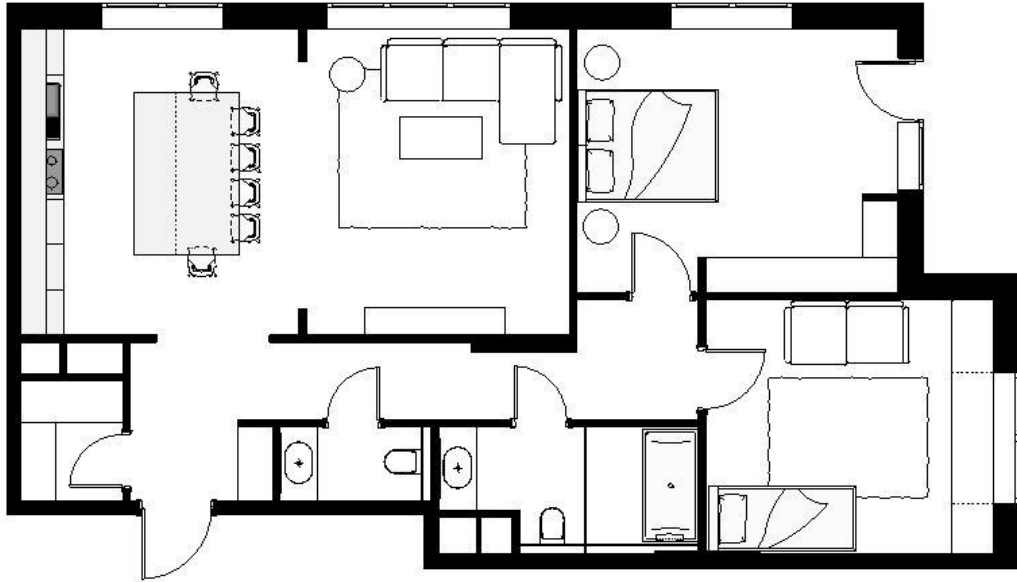
Walls planned to be demolished is shown on the existing plan with red color with the purpose of visually separating and connecting at the same time the living room and the kitchen areas .



Proposed plan

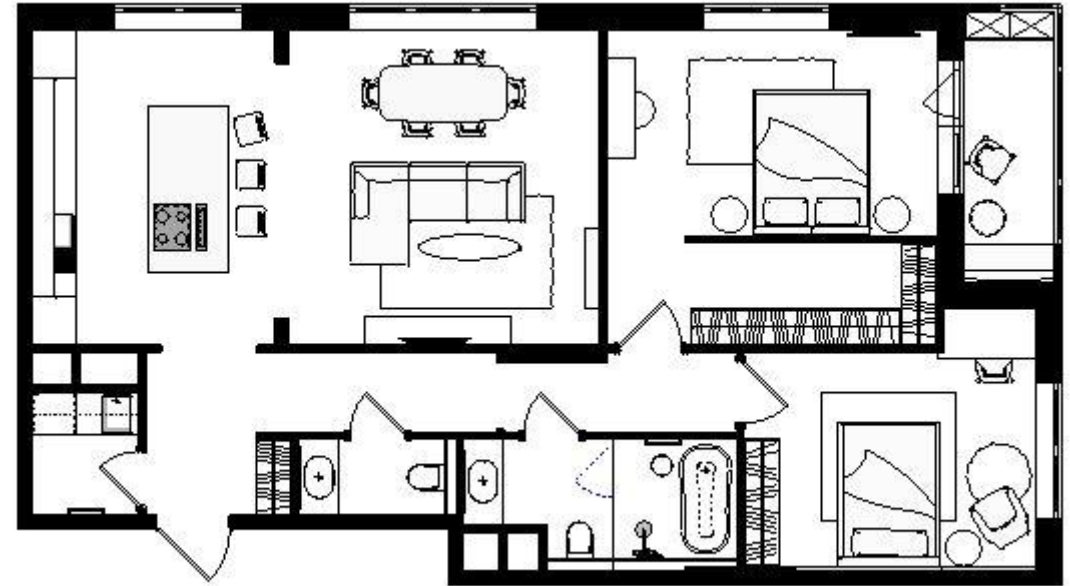
Walls planned to be built is shown on the proposed plan with green color. We only proposed slight changes for cost efficiency.

EXISTING AND PROPOSED DESIGN



Existing design

We proposed an alternative design solution in case of the walls are not allowed to be changed or demolished.



Proposed design

In the proposed design the kitchen and the living room are separated by an arch, giving the feeling of semi-separated space, to divide the space into kitchen and the living zones.

FURNITURE PLAN



- 1.Hall/Corridor - 9.95 m²
- 2.Laundry - 2.46 m²
- 3.W/C - 2.11 m²
- 4.Bathroom - 5.89 m²
- 5.Kid room - 12.81 m²
- 6.Bedroom - 20.10 m²
- 7.Living room - 19.30 m²
8. Kitchen - 14.56 m²

Total - 99.20 m²
(Internal walls and balcony included)

KITCHEN

Collage



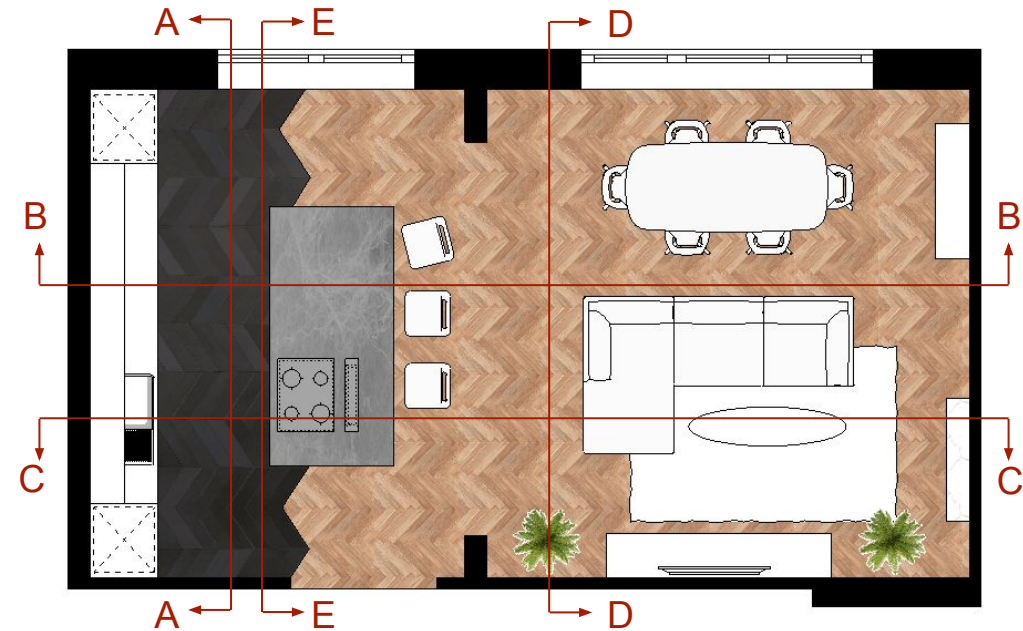
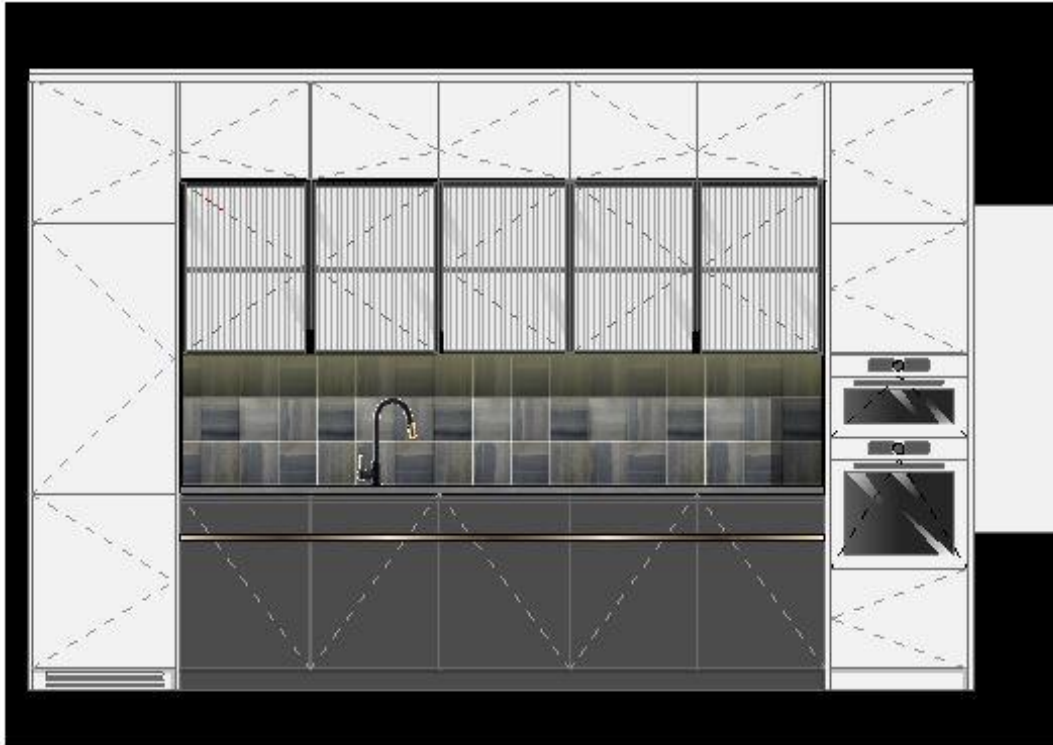
LIVING ROOM

Collage

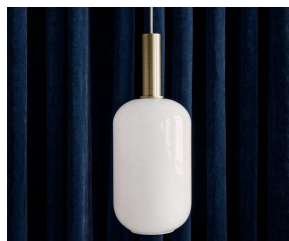
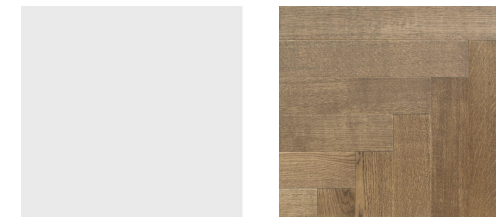


KITCHEN

PLAN, SECTION A-A



The kitchen furniture was designed to occupy only one wall of the kitchen to create the feeling of spacious space. By using white as the main color we decreased the loaded feeling of the wall and we added glass elements to make the view lighter and more transparent. The gold detailing on the frame of the furniture added nice dynamic touch. And the black color creates a contrast with the overall design. The same idea of gold and black was used in the bar table as well to complete the kitchen design concept.

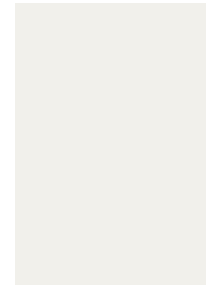
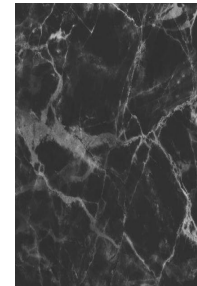


KITCHEN + LIVING ROOM

SECTION B-B

KITCHEN

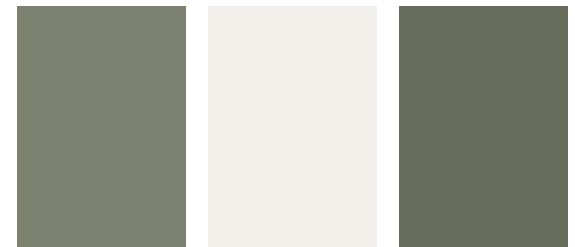
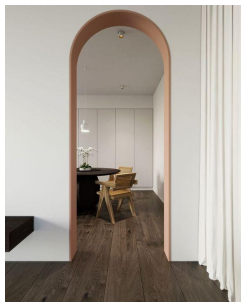
LIVING ROOM



LIVING ROOM-KITCHEN

SECTION C-C

Crown moldings, skirtings, and the wall moldings in the same time the arch and the arch frame was designed in the darker shade of chosen color to create a contrast and as a framing accent on the walls.



KITCHEN-LIVING ROOM

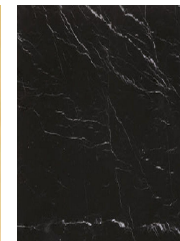
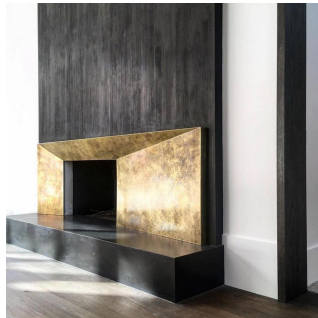
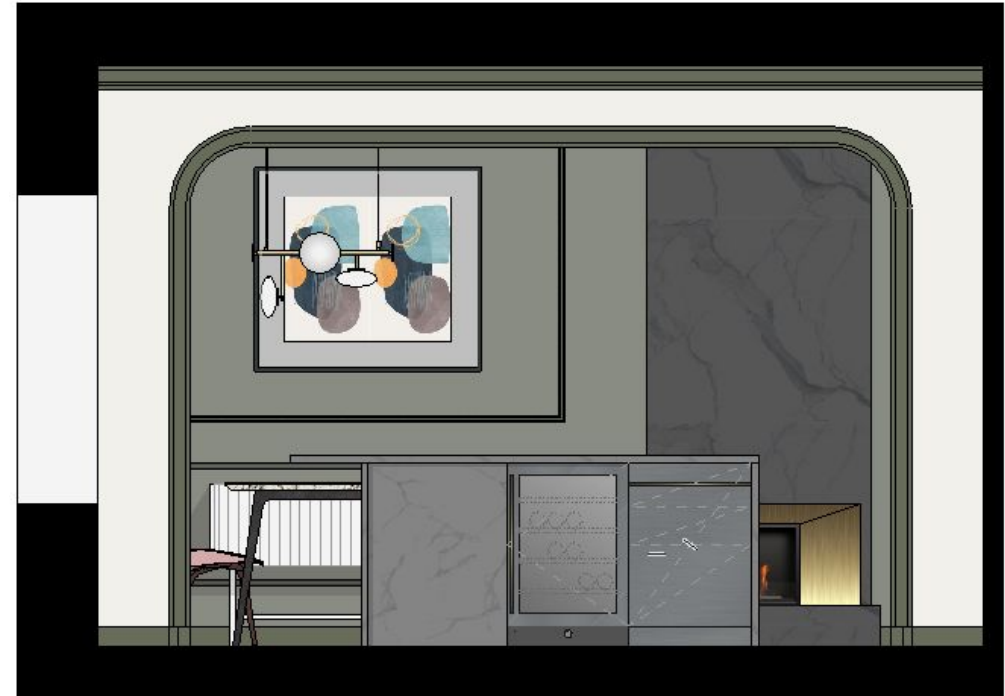
SECTION D-D;E-E

Artificial fireplace creates the feeling of coziness and warmth, used golden element of the fireplace completes the concept of the overall design. at the same time the fireplace differentiates the living space from the dining space. The arch divides the whole space into kitchen and the living areas. The golden color repeats itself as accent in lightning and decor elements.

SECTION D-D



SECTION E-E



KITCHEN

3D Visualisations



KITCHEN

3D Visualisations



LIVING ROOM

3D Visualisations



LIVING ROOM

3D Visualisations



LIVING ROOM

3D Visualisations



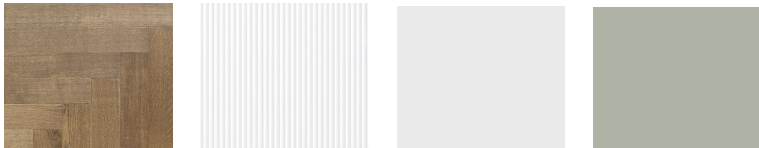
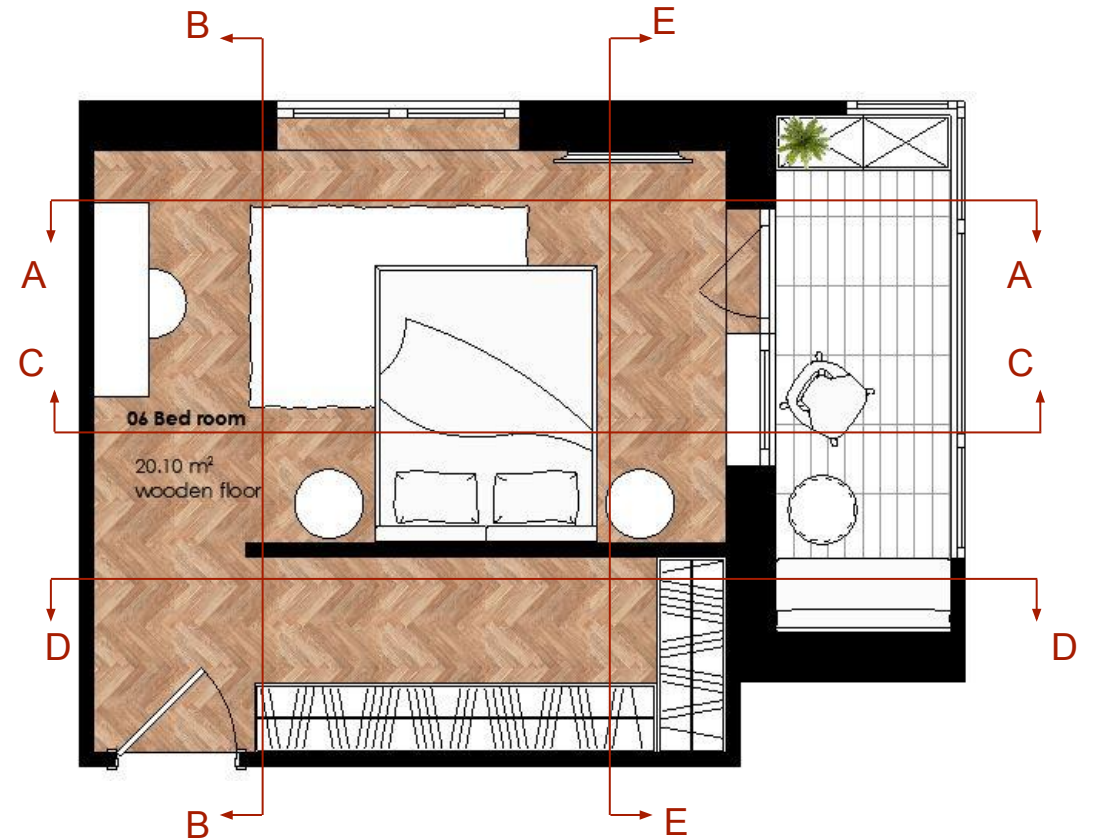
MASTER BEDROOM-WARDROBE

Collage



MASTER BEDROOM-WARDROBE

SECTION A-A



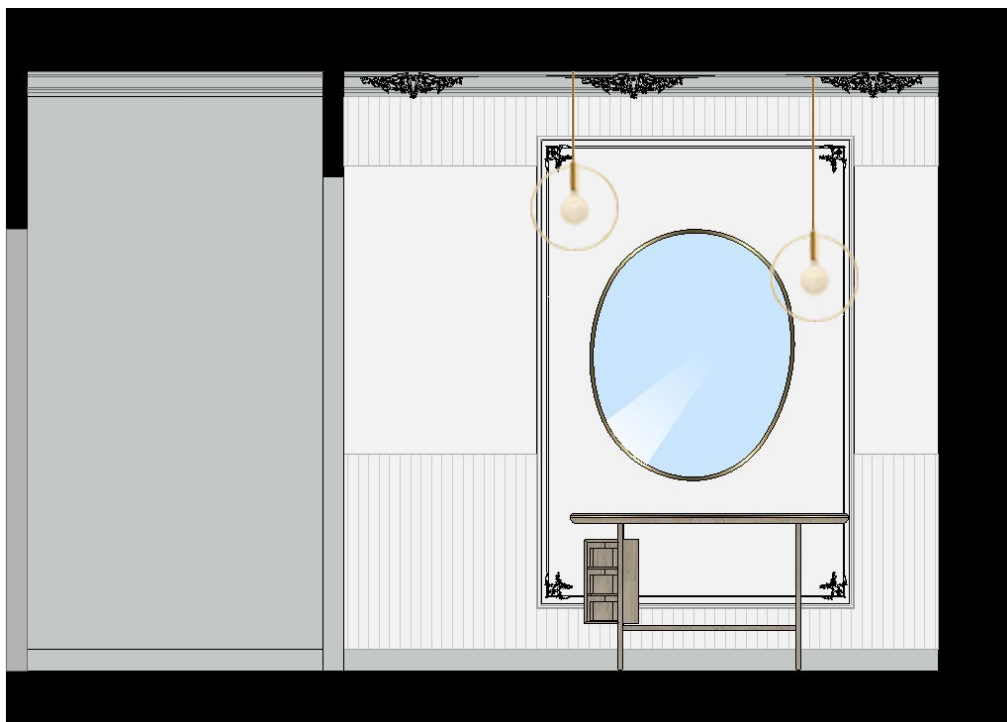
The wardrobe and the bedroom space is separated and the entrance to the bedroom is designed from the wardrobe. The same color palette is used to design the bedroom as the living room.



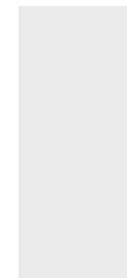
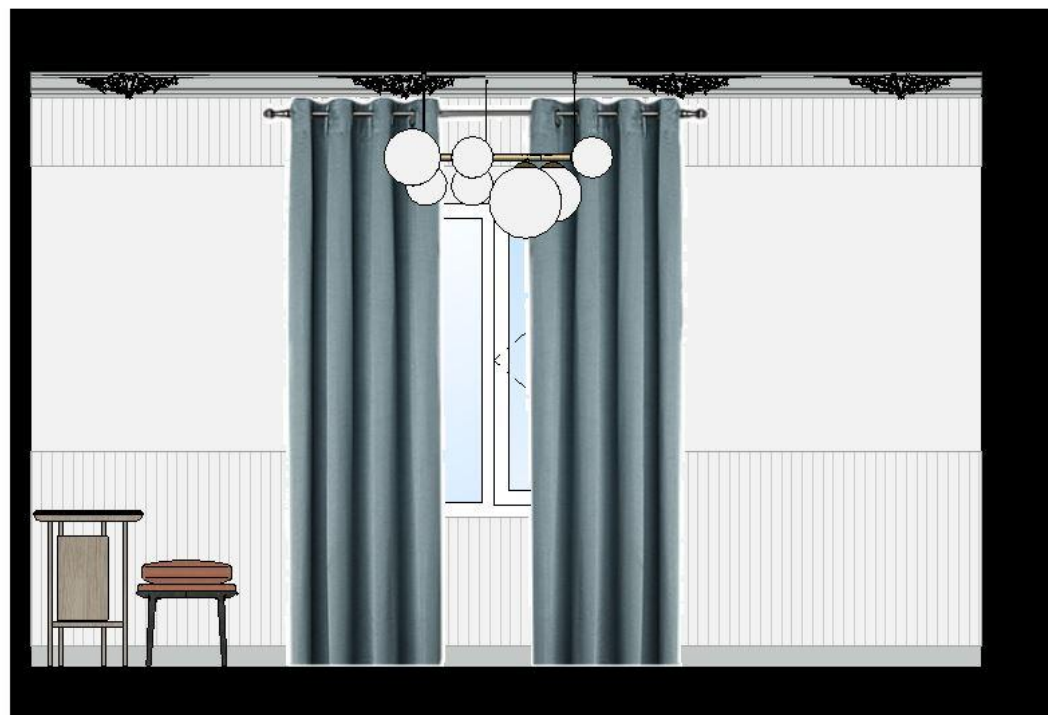
MASTER BEDROOM-WARDROBE

SECTION B-B; C-C

SECTION B-B



SECTION C-C



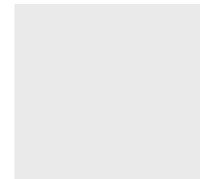
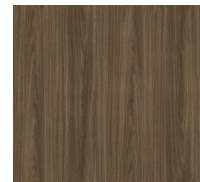
MASTER BEDROOM-WARDROBE

SECTION D-D; E-E

SECTION D-D



SECTION E-E



The shelves of the wardrobe are designed in an L-shape. The main material is oak, the doors are glass, and gold is used in detailing. There is a wall-size mirror on the wall facing the wardrobe.

MASTER BEDROOM-WARDROBE

3D Visualisations



MASTER BEDROOM

3D Visualisations



MASTER BEDROOM-WARDROBE

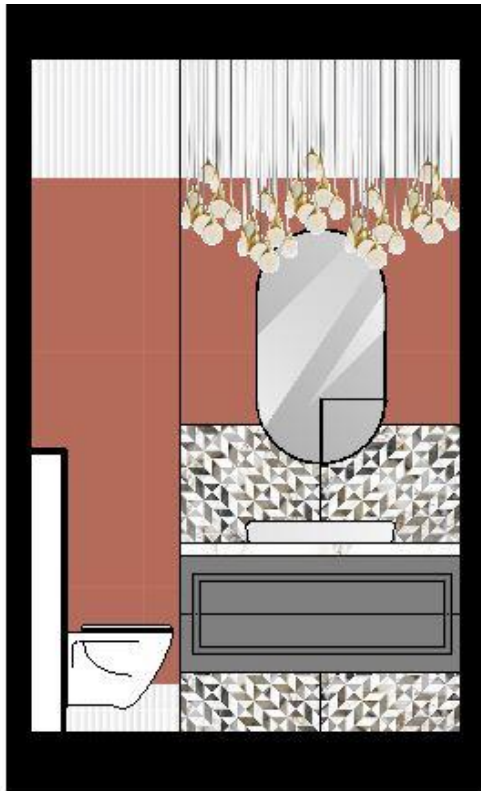
3D Visualisations



MASTER BATHROOM

Sections A-A; B-B

SECTION A-A



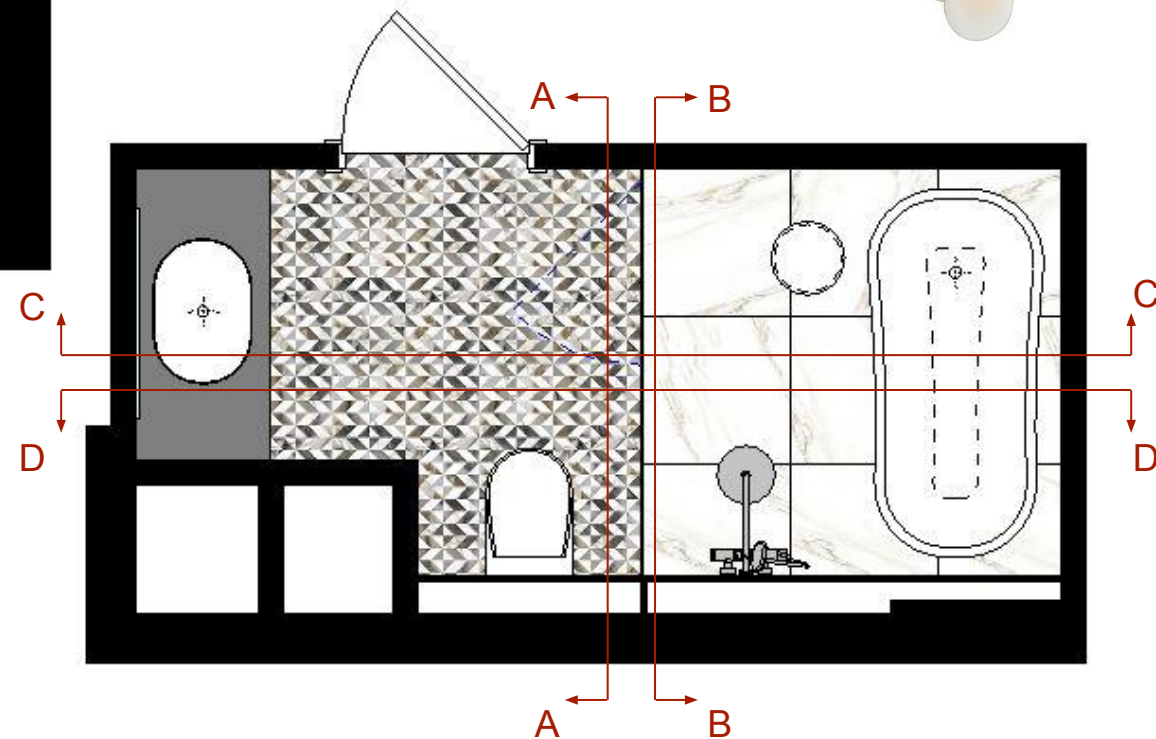
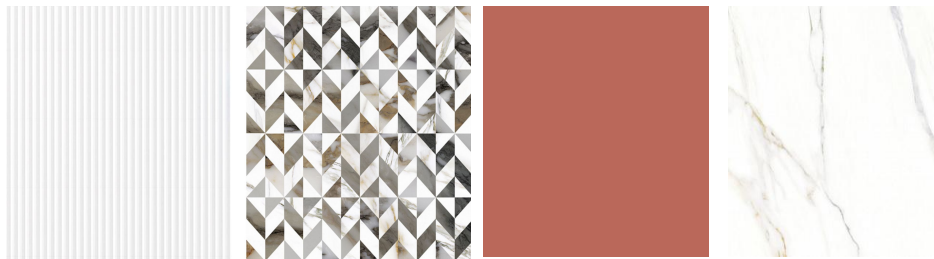
SECTION B-B



The glass door separating the master bathroom into two spaces: the bathing space and the lavatory.

The marble material is used to design the bathing space and strengthening the accent on this part, while the lavatory space is designed more in warm and vibrant colors and textures. All the accessories used are chosen in the golden range.

We proposed both shower and bathtub to accommodate all the needs of the residents of the apartment.



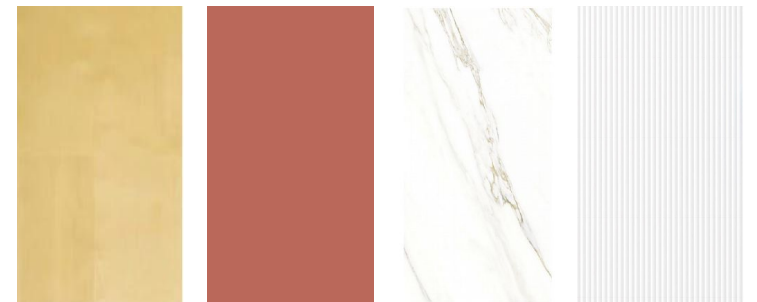
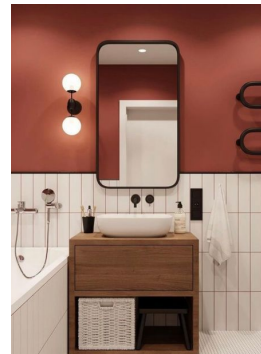
MASTER BATHROOM

Sections C-C; D-D

SECTION C-C

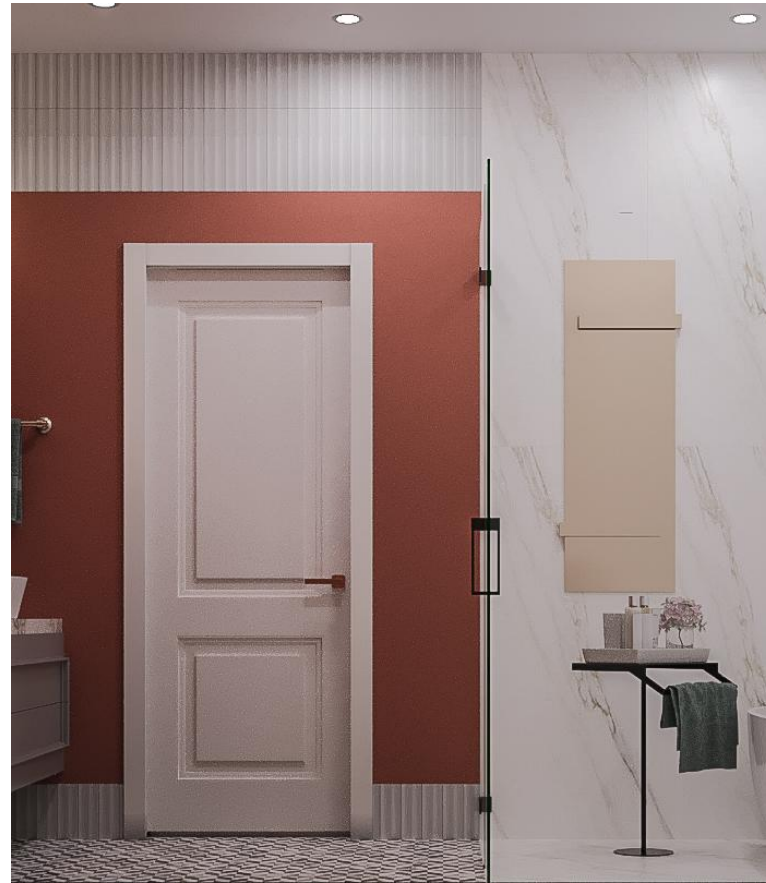


SECTION D-D



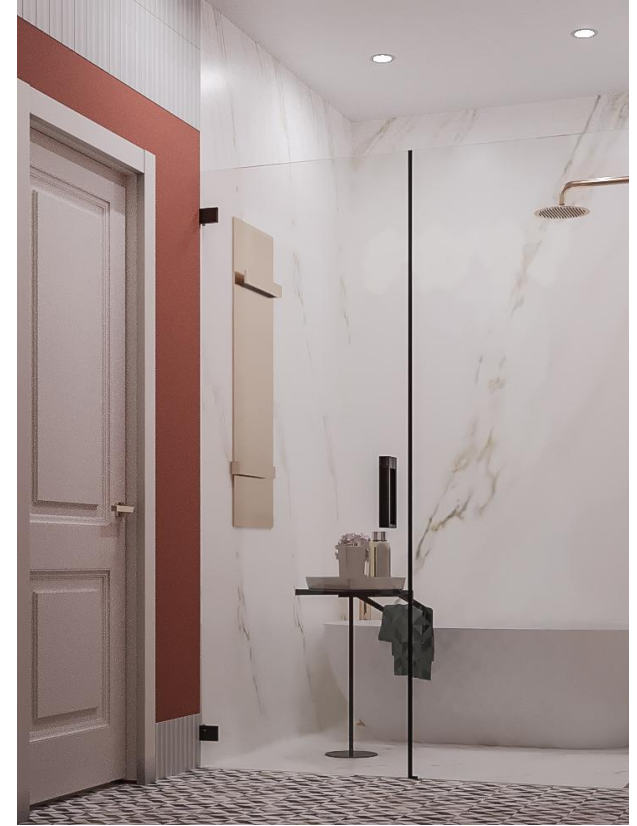
MASTER BATHROOM

3D Visualisations



MASTER BATHROOM

3D Visualisations



KIDS BEDROOM

Collage



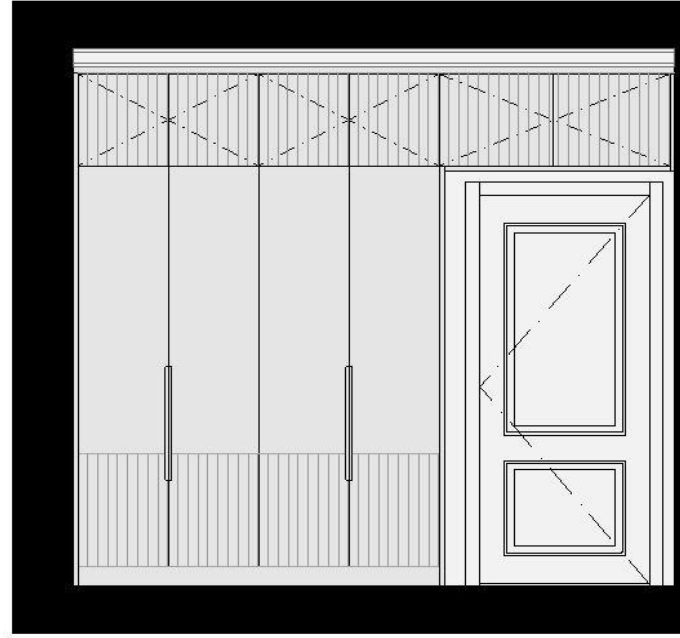
KIDS BEDROOM

SECTION A-A; B-B

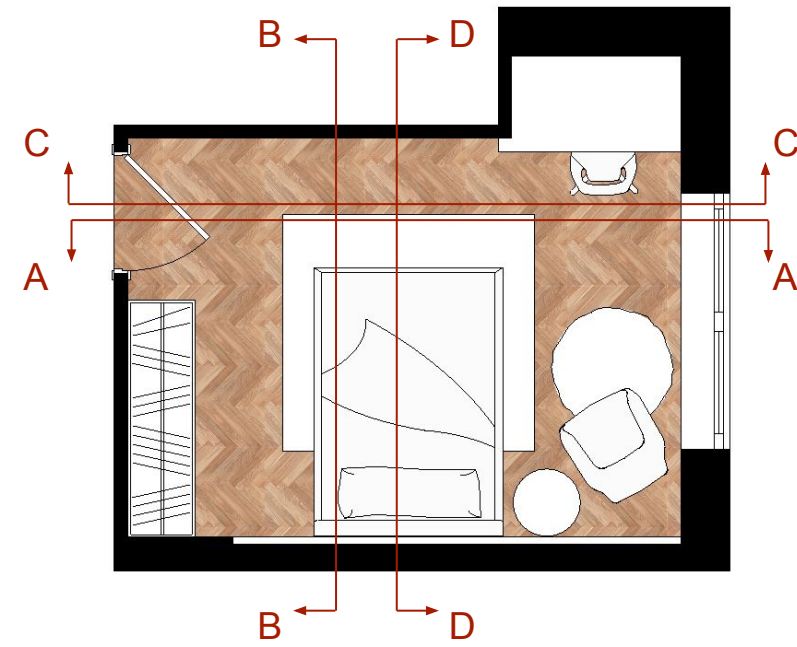
SECTION A-A



SECTION B-B



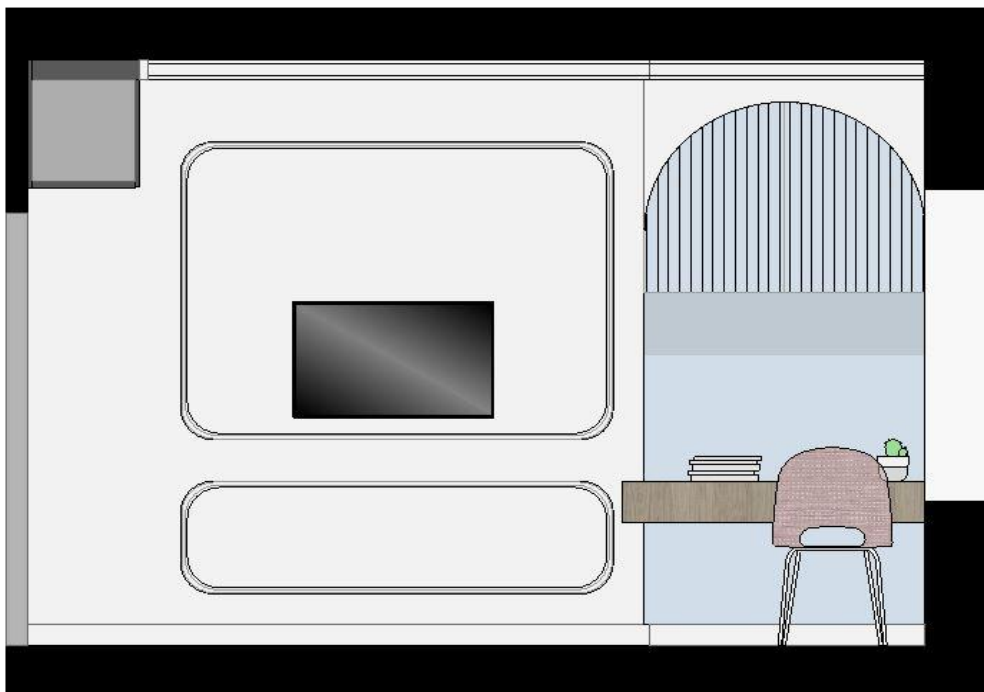
The Kid's bedroom are designed in gender-neutral color palette. The different textures such as velvet headboard and ribbed wall finish as well as the strong bright wall color is used to make the room livelier. The save space we designed the wardrobe fixed on the entrance wall, using even the wall on top of the door.



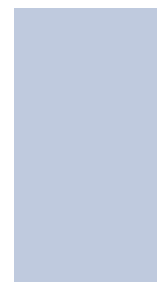
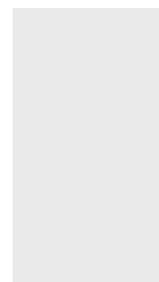
KIDS BEDROOM

SECTION C-C; D-D

SECTION C-C



SECTION D-D



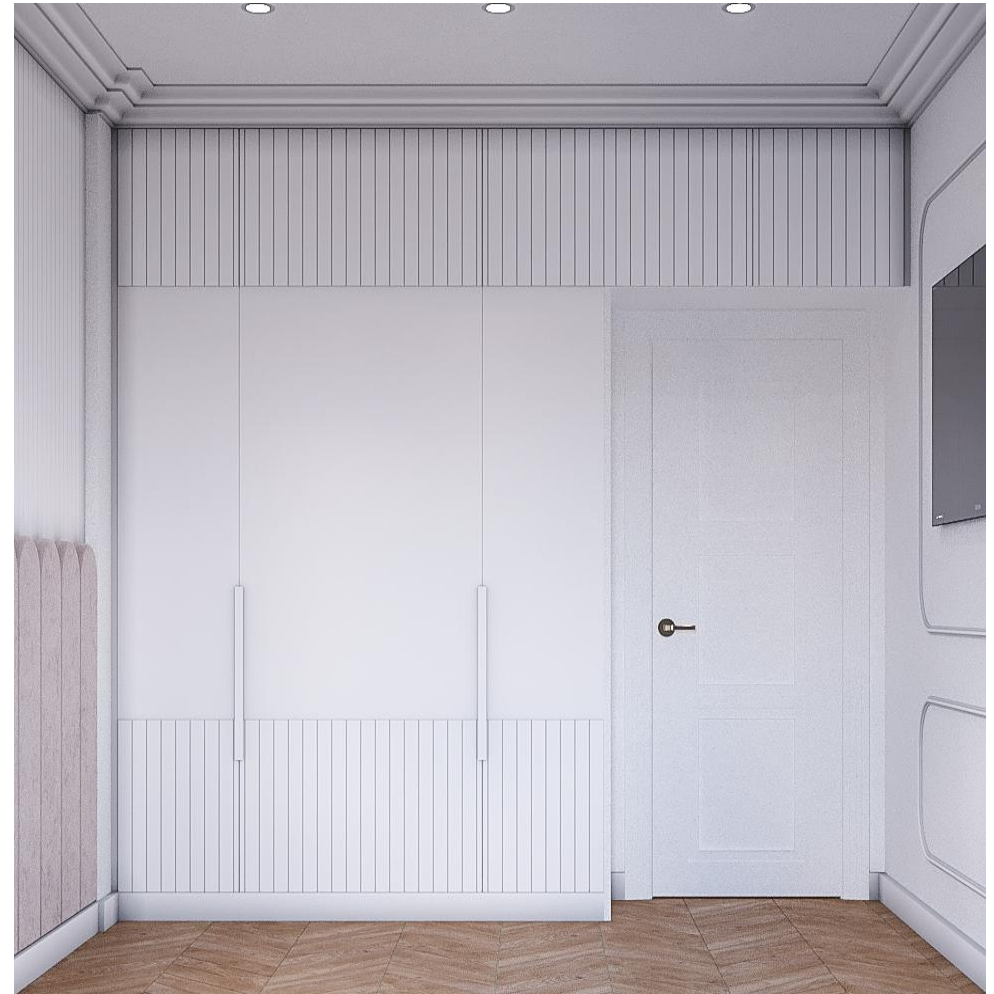
KIDS BEDROOM

3D Visualisations



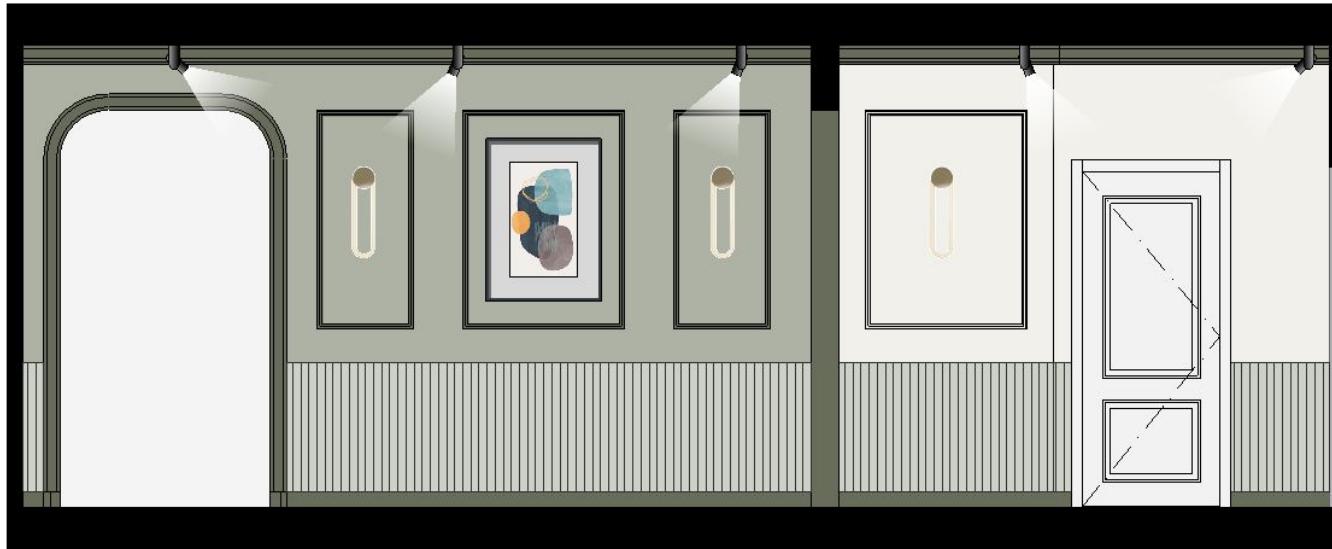
KIDS BEDROOM

3D Visualisations



ENTRANCE HALL-CORRIDOR

Section A-A



The corridor is divided into common and the bedroom zones, which are indicated with two different colors and separated by an arched doorway. The walls are decorated with moldings to have richer and more sophisticated look.

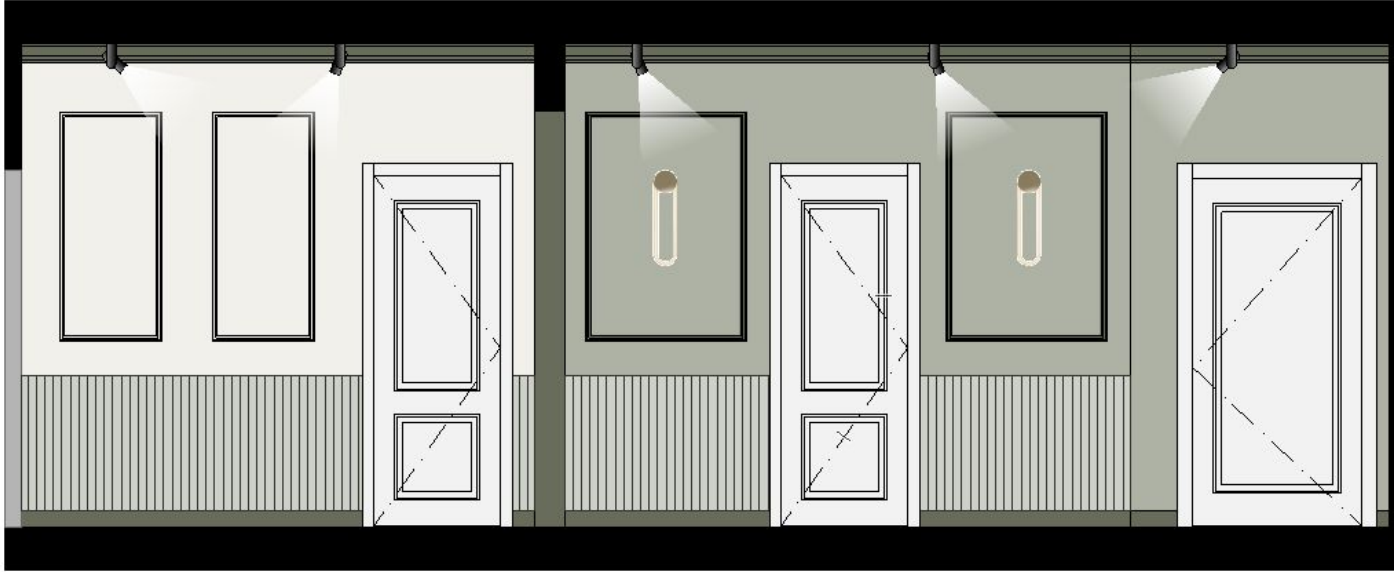
To differentiate the entrance of the apartment from the corridor, we proposed a different ceramic material for the floor. The wardrobe is placed next to the entrance and is made in green color and decorated with golden elements. As a furniture we proposed a marble console with a golden framed mirror.



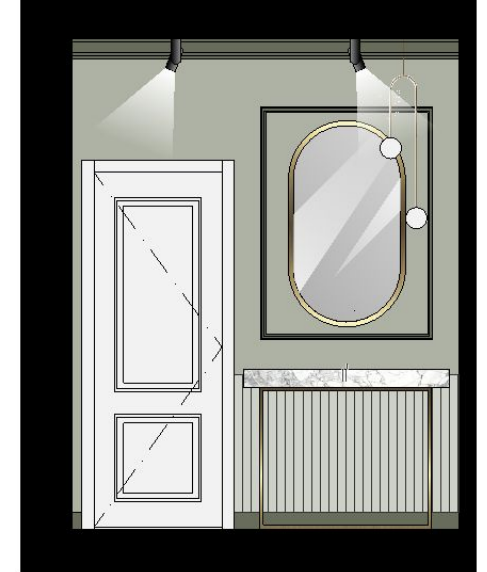
ENTRANCE HALL-CORRIDOR

Sections B-B; C-C; E-E; D-D

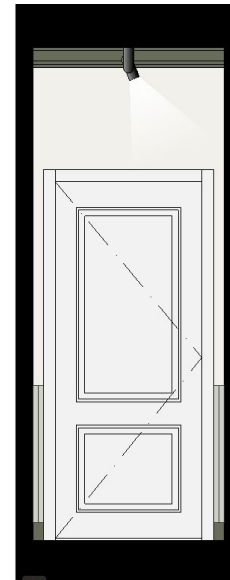
SECTION B-B



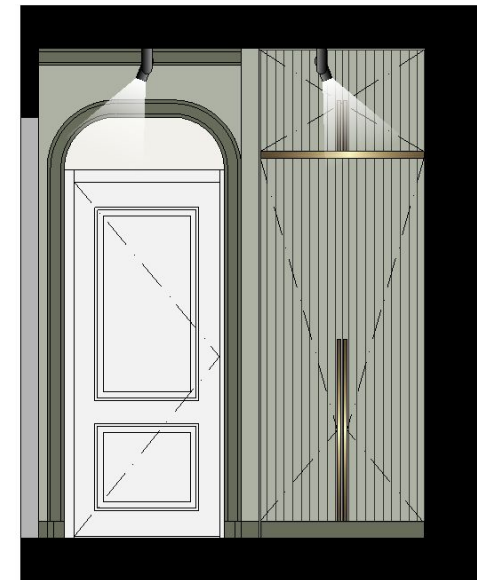
SECTION C-C



SECTION E-E



SECTION D-D



ENTRANCE HALL-CORRIDOR

3D Visualisations



ENTRANCE HALL-CORRIDOR

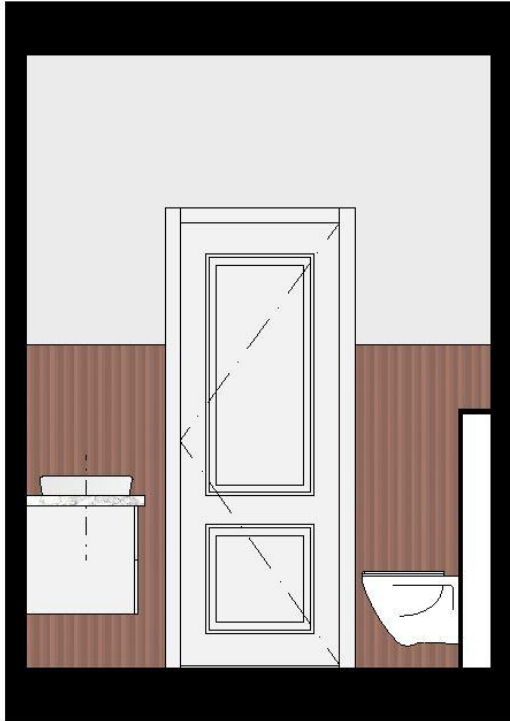
3D Visualisations



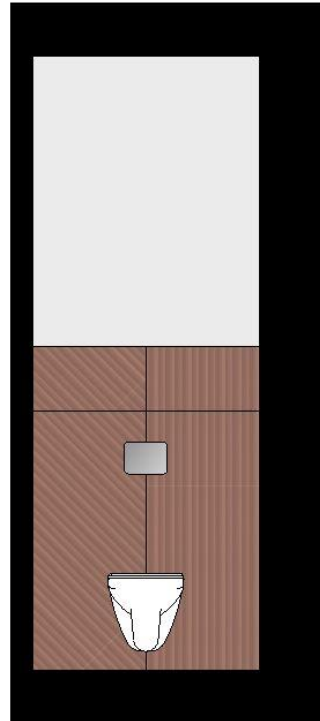
GUEST BATHROOM

SECTION A-A; B-B; C-C; D-D

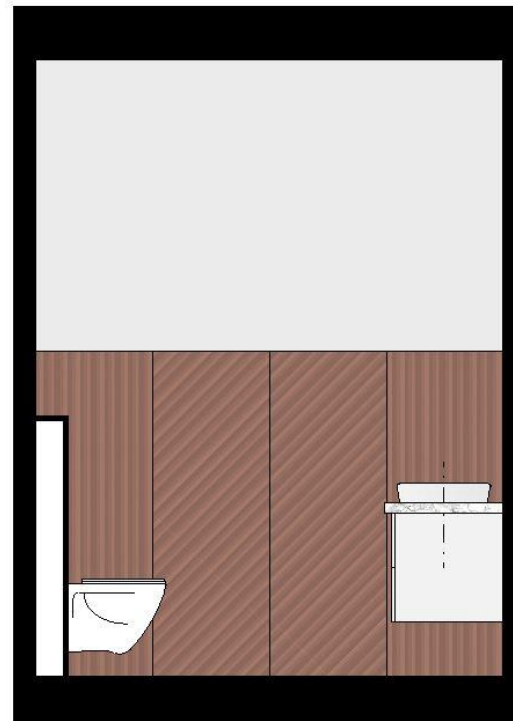
SECTION A-A



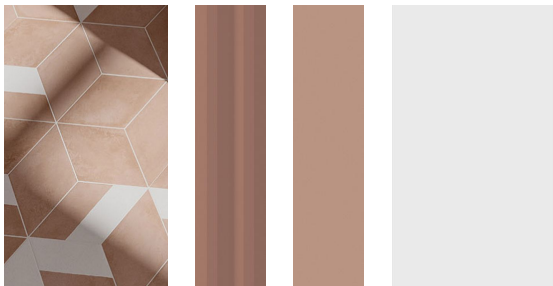
SECTION B-B



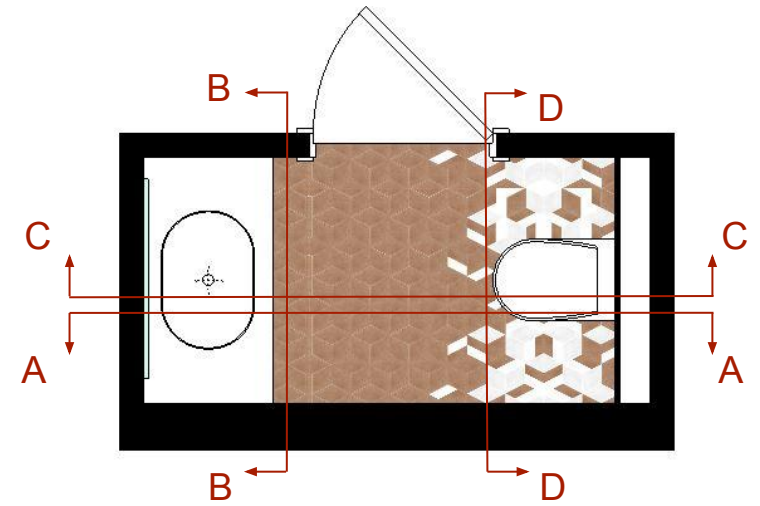
SECTION C-C



SECTION D-D



Because the size of the guest bathroom is small, we used a simpler design, but we kept it in vibrant colors and textures. The tiles were used in different angles to achieve a dynamic texture on the walls which makes the design more interesting.



GUEST BATHROOM

3D Visualisations

